

QC Electrics

ELECTRICAL PRODUCTS



CHNT

THE WORLDS LARGEST ELECTRICAL MANUFACTURER

VOLT[®]

HIGH QUALITY ELECTRICAL PRODUCTS

sales@qcelectrics.co.nz

09 421 1180

www.qcelectrics.co.nz

Contents

SECTION ONE INDUSTRIAL

RESIDUAL CURRENT DEVICES

RCDs (RCCBs)	5
Arc Fault Detection Devices (AFDD)	5
RCBOs (RCD with over current protection)	5

MODULAR DIN RAIL

Main Switches	6
Miniature Circuit Breakers 6KA	6
Miniature Circuit Breakers 10KA	8
Surge Arresters	10
Din Mount Contactors	10
Indicators	10
Timers	10
MCB/RCD Accessories	10
Bus Bars and Endcaps	10

INDUSTRIAL CONTACTORS AND ACCESSORIES

Contactors	11
NC1 Coils	12
Next Series Contactors	12
NC2 Contactors	12
NC2 Contact Sets	12
NC2 Coils	13
NC1 and NC2 Accessories	13
Capacitor (Switching Contactor)	13
NC8 Contactors	13
Air Conditioning Unit Contactors	14
Switch Disconnectors and Changeover Switches	14
Automatic Changeover Switches	14
Noark DC Miniature Circuit Breakers	14
Noark DC Fuse Disconnectors	14
DC Surge Arrestors	14

MOULDED CASE CIRCUIT BREAKERS

NM8 Series Adjustable Thermal Magnetic	15
NM8 Series Adjustable Electronic	15
NM8 DC MCCB	15
NM8 Terminal Covers	15
NM8 Shunt Release	16

NM8 Auxiliary Contacts	16
NM8 Rotary Handles	16
NM8 Rear Connection Kits	16
NM8 Motor Mechanisms	16
NX Series Adjustable Thermal Magnetic	16
NX Series Adjustable Electronic	16
NXM Shunt Release	17
NXM Auxiliary Contacts	17
NXM Rotary Handles	17

MOTOR STARTERS

DOL Motor Starter (With Enclosure)	17
DOL Motor Starter (Without Enclosure)	
Accessories	17

MOTOR OVERLOADS

Electronic Motor Overloads	18
Thermal Overloads	18

PUSH BUTTONS, LOCKING SWITCHES AND SIGNAL LIGHTS

NP2 Metal Base Range	19
NP2 Plastic Base Range	19
NP2 Contacts	19
NP2 Enclosures	20
NP2 Labels	20
NP8 Range	20
NP8 Contacts	21
NP2 LED Lamps	21
ND16 LED Indicator Range	22

RELAYS AND BASES

Relay Bases	22
Relays	23

POWER FACTOR CORRECTION CAPACITORS

POWER FACTOR CORRECTION CONTROLLER

SMART METER

SECTION TWO IP66 SERIES

IP RATED SERIES

Light Switches	25
Inlet	25
Isolating Switch and Base (Rotary type)	25
Isolating Switch and Base (Lever type)	25
Power Points	25

IP66 SERIES

IP66 Enclosures	26
IP Rated 4 Pole MCB Cover	26
Bases	26
Enclosure Lids	26
Switched Socket and Base	26
Socket and Base	27
Male Plugs	27
Cord Connectors	28

SECTION THREE CONDUIT AND ACCESSORIES

CABLE DUCTING	30
CONDUIT	30
CONDUIT ACCESSORIES	31

SECTION FOUR RESIDENTIAL

SWITCH BOARDS AND ENCLOSURES

Surface Mount Switch Boards	36
IP Rated Switch Boards	36
Flush Mount Switch Boards	36
Din Rail Enclosures	36
Din Rail Enclosures With Tags	36

MODULAR DIN RAIL

RCDs (RCCBs)	37
RCBOs (RCD with over current protection)	37

RESIDUAL CURRENT DEVICES

Main Switches	37
Miniature Circuit Breakers 6KA (Class 3 Industrial)	37

LIGHTING 38

WIRELESS RANGE 38

SWITCH PLATES

Switches	39
Mechanisms	39
Power Points	40
TV Outlets	40
PCU & Phone Outlets	40
Switch Grid Plates & Covers	40
Covers - Silver	40

WIRING ACCESSORIES 41

SECTION ONE

Industrial



RESIDUAL CURRENT DEVICES

RCDs (RCCBs)

SKU	Variant Name
NL1-63-40-2P	40 Amp 2 Pole 6kA 'A' Type RCCB
NL1-63-63-2P	63 Amp 2 Pole 6kA 'A' Type RCCB
NL1-63-63-4P	63 Amp 4 Pole 6kA 'A' Type RCCB
NL210-63A 1PN 30mA	63 Amp B Type 2 Pole RCCB
NL210-63A 3PN 30mA	63 Amp B Type 3 Pole RCCB



NL1-63-63-4P

Arc Fault Detection Devices (AFDD)

SKU	Variant Name
NB4LE06	6 Amp C Curve 6kA RCBO
NB4LE10	10 Amp C Curve 6kA RCBO
NB4LE16	16 Amp C Curve 6kA RCBO
NB4LE20	20 Amp C Curve 6kA RCBO
NB4LE25	25 Amp C Curve 6kA RCBO
NB4LE32	32 Amp C Curve 6kA RCBO



NB4LE16

RCBOs (RCD with over current protection)

SKU	Variant Name
NB1L10A	1 Pole + N C10 30mA 'A' 6kA RCBO
NB1L16A	1 Pole + N C16 30mA 'A' 6kA RCBO
NB1L20A	1 Pole + N C20 30mA 'A' 6kA RCBO
NB2LE06A 6KA	Single Din RCBO 6A 6kA
NB2LE10A 6KA	Single Din RCBO 10A 6kA
NB2LE16A 6KA	Single Din RCBO 16A 6kA
NB2LE20A 6KA	Single Din RCBO 20A 6kA
NB2LE25A 6KA	Single Din RCBO 25A 6kA



NB1L16A

MODULAR DIN RAIL

Main Switches

SKU	Variant Name
NH4-1P-63A	63 amp 1 Pole Main Switch
NH4-2P-63A	63 amp 2 Pole Main Switch
NH4-3P-63A	63 amp 3 Pole Main Switch
NH4-1P-100A	100 Amp 1 Pole Main Switch
NH4-2P-100A	100 Amp 2 Pole Main Switch
NH4-3P-100A	100 Amp 3 Pole Main Switch
NH4-4P-100A	100 Amp 4 Pole Main Switch
NH4-1P-125A	125 amp 1 Pole Main Switch
NH4-3P-125A	125 amp 3 Pole Main Switch
NH4-4P-125A	125 Amp 4 Pole Main Switch



NH4-1P-125A

Miniature Circuit Breakers 6KA (Class 3 Industrial)

'C' CURVE 1 POLE

SKU	Variant Name
NB1-63-02C1	2 Amp 6kA 1 Pole C Curve MCB
NB1-63-04C1	4 Amp 6kA 1 Pole C Curve MCB
NB1-63-06C1	6 amp 6kA 1 Pole C Curve MCB
NB1-63-10C1	10 amp 6kA 1 Pole C Curve MCB
NB1-63-16C1	16 amp 6kA 1 Pole C Curve MCB
NB1-63-20C1	20 amp 6kA 1 Pole C Curve MCB
NB1-63-25C1	25 Amp 6kA 1 Pole C Curve MCB
NB1-63-32C1	32 amp 6kA 1 Pole C Curve MCB
NB1-63-40C1	40 amp 6kA 1 Pole C Curve MCB
NB1-63-50C1	50 amp 6kA 1 Pole C Curve MCB
NB1-63-63C1	63 amp 6kA 1 Pole C Curve MCB
DZ158-80C1	80 Amp 6kA 1 Pole C Curve MCB
DZ158-100C1	100 Amp 6kA 1 Pole C Curve MCB
DZ158-125C1	125 Amp 6kA 1 Pole C Curve MCB



NB1 1 POLE MCB

'C' CURVE 1 POLE PLUS NEUTRAL

SKU	Variant Name
NBH8-40H-C40	40 Amp 6Ka 1P+N C Curve MCB



DZ158 1 POLE MCB

Miniature Circuit Breakers 6kA (Class 3 Industrial)

'C' CURVE 3 POLE

SKU	Variant Name
NB1-63-02C3	2 Amp 6kA 3 Pole C Curve MCB
NB1-63-04C3	4 Amp 6kA 3 Pole C Curve MCB
NB1-63-06C3	6 Amp 6kA 3 Pole C Curve MCB
NB1-63-10C3	10 Amp 6kA 3 Pole C Curve MCB
NB1-63-16C3	16 Amp 6kA 3 Pole C Curve MCB
NB1-63-20C3	20 Amp 6kA 3 Pole C Curve MCB
NB1-63-25C3	25 Amp 6kA 3 Pole C Curve MCB
NB1-63-32C3	32 Amp 6kA 3 Pole C Curve MCB
NB1-63-40C3	40 Amp 6kA 3 Pole C Curve MCB
NB1-63-50C3	50 Amp 6kA 3 Pole C Curve MCB
NB1-63-63C3	63 Amp 6kA 3 Pole C Curve MCB
DZ158-80C3	80 Amp 6kA 3 Pole C Curve MCB
DZ158-100C3	100 Amp 6kA 3 Pole C Curve MCB
DZ158-125C3	125 Amp 6kA 3 Pole C Curve MCB



NB1 3 POLE MCB



DZ158 3 POLE MCB

'D' CURVE 1 POLE

SKU	Variant Name
NB1-63-04D1	4 Amp 6kA 1 Pole D Curve MCB
NB1-63-06D1	6 Amp 6kA 1 Pole D Curve MCB
NB1-63-10D1	10 Amp 6kA 1 Pole D Curve MCB
NB1-63-16D1	16 Amp 6kA 1 Pole D Curve MCB
NB1-63-20D1	20 amp 6kA 1 Pole D Curve MCB
NB1-63-25D1	25 amp 6kA 1 Pole D Curve MCB
NB1-63-32D1	32 amp 6kA 1 Pole D Curve MCB
NB1-63-50D1	50 amp 6kA 1 Pole D Curve MCB
NB1-63-63D1	63 amp 6kA 1 Pole D Curve MCB



NB1 1 POLE MCB

'D' CURVE 3 POLE

SKU	Variant Name
NB1-63-10D3	10 Amp 6kA 3 Pole D Curve MCB
NB1-63-16D3	16 Amp 6kA 3 Pole D Curve MCB
NB1-63-20D3	20 Amp 6kA 3 Pole D Curve MCB
NB1-63-25D3	25 Amp 6kA 3 Pole D Curve MCB
NB1-63-32D3	32 Amp 6kA 3 Pole D Curve MCB
NB1-63-40D3	40 Amp 6kA 3 Pole D Curve MCB
NB1-63-50D3	50 Amp 6kA 3 Pole D Curve MCB
NB1-63-63D3	63 Amp 6kA 3 Pole D Curve MCB



NB1 3 POLE MCB

Miniature Circuit Breakers 10KA

'C' CURVE 1 POLE

SKU	Variant Name
NB1-63-02C1-10K	2 Amp 10kA 1 Pole C Curve MCB
NB1-63-04C1-10K	4 Amp 10kA 1 Pole C Curve MCB
NB1-63-06C1-10K	6 Amp 10kA 1 Pole C Curve MCB
NB1-63-10C1-10K	10 Amp 10kA 1 Pole C Curve MCB
NB1-63-16C1-10K	16 Amp 10kA 1 Pole C Curve MCB
NB1-63-20C1-10K	20 Amp 10kA 1 Pole C Curve MCB
NB1-63-25C1-10K	25 Amp 10kA 1 Pole C Curve MCB
NB1-63-32C1-10K	32 Amp 10kA 1 Pole C Curve MCB
NB1-63-40C1-10K	40 Amp 10kA 1 Pole C Curve MCB
NB1-63-50C1-10K	50 Amp 10kA 1 Pole C Curve MCB
NB1-63-63C1-10K	63 Amp 10kA 1 Pole C Curve MCB
DZ158-63C1-10K	63 Amp 10kA 1 Pole C Curve MCB
DZ158-80C1-10K	80 Amp 10kA 1 Pole C Curve MCB
DZ158-100C1-10K	100 Amp 10kA 1 Pole C Curve MCB
DZ158-125C1-10K	125 Amp 10kA 1 Pole C Curve MCB



NB1 1 POLE MCB



DZ158 1 POLE MCB

'C' CURVE 2 POLE

SKU	Variant Name
NB1-63-02C2-10K	2 Amp 10kA 2 Pole C Curve MCB
NB1-63-04C2-10K	4 Amp 10kA 2 Pole C Curve MCB
NB1-63-06C2-10K	6 Amp 10kA 2 Pole C Curve MCB
NB1-63-10C2-10K	10 Amp 10kA 2 Pole C Curve MCB
NB1-63-16C2-10K	16 Amp 10kA 2 Pole C Curve MCB
NB1-63-20C2-10K	20 Amp 10kA 2 Pole C Curve MCB
NB1-63-25C2-10K	25 Amp 10kA 2 Pole C Curve MCB
NB1-63-32C2-10K	32 Amp 10kA 2 Pole C Curve MCB
NB1-63-40C2-10K	40 Amp 10kA 2 Pole C Curve MCB
NB1-63-50C2-10K	50 Amp 10kA 2 Pole C Curve MCB
NB1-63-63C2-10K	63 Amp 10kA 2 Pole C Curve MCB
DZ158-63C2-10K	63 Amp 10kA 2 Pole C Curve MCB
DZ158-80C2-10K	80 Amp 10kA 2 Pole C Curve MCB
DZ158-100C2-10K	100 Amp 10kA 2 Pole C Curve MCB
DZ158-125C2-10K	125 Amp 10kA 2 Pole C Curve MCB



NB1 2 POLE MCB

'C' CURVE 3 POLE

SKU	Variant Name
NB1-63-02C3-10K	2 Amp 10kA 3 Pole C Curve MCB
NB1-63-04C3-10K	4 Amp 10kA 3 Pole C Curve MCB
NB1-63-06C3-10K	6 Amp 10kA 3 Pole C Curve MCB
NB1-63-10C3-10K	10 Amp 10kA 3 Pole C Curve MCB
NB1-63-16C3-10K	16 Amp 10kA 3 Pole C Curve MCB
NB1-63-20C3-10K	20 Amp 10kA 3 Pole C Curve MCB
NB1-63-25C3-10K	25 Amp 10kA 3 Pole C Curve MCB
NB1-63-32C3-10K	32 Amp 10kA 3 Pole C Curve MCB
NB1-63-40C3-10K	40 Amp 10kA 3 Pole C Curve MCB
NB1-63-50C3-10K	50 Amp 10kA 3 Pole C Curve MCB
NB1-63-63C3-10K	63 Amp 10kA 3 Pole C Curve MCB
DZ158-63C3-10K	63 Amp 10kA 3 Pole C Curve MCB
DZ158-80C3-10K	80 Amp 10kA 3 Pole C Curve MCB
DZ158-100C3-10K	100 Amp 10kA 3 Pole C Curve MCB
DZ158-125C3-10K	125 Amp 10kA 3 Pole C Curve MCB



DZ158 2 POLE MCB



NB1 3 POLE MCB

Miniature Circuit Breakers 10KA continued

'C' CURVE 4 POLE

SKU	Variant Name
DZ158-63C4-10K	63 Amp 10kA 4 Pole C Curve MCB
DZ158-80C4-10K	80 Amp 10kA 4 Pole C Curve MCB
DZ158-100C4-10K	100 Amp 10kA 4 Pole C Curve MCB
DZ158-125C4-10K	125 Amp 10kA 4 Pole C Curve MCB



DZ158 3 POLE MCB

'D' CURVE 1 POLE

SKU	Variant Name
NB1-63-02D1-10K	2 Amp 10kA 1 Pole D Curve MCB
NB1-63-04D1-10K	4 Amp 10kA 1 Pole D Curve MCB
NB1-63-06D1-10K	6 Amp 10kA 1 Pole D Curve MCB
NB1-63-10D1-10K	10 Amp 10kA 1 Pole D Curve MCB
NB1-63-16D1-10K	16 Amp 10kA 1 Pole D Curve MCB
NB1-63-20D1-10K	20 Amp 10kA 1 Pole D Curve MCB
NB1-63-25D1-10K	25 Amp 10kA 1 Pole D Curve MCB
NB1-63-32D1-10K	32 Amp 10kA 1 Pole D Curve MCB
NB1-63-40D1-10K	40 Amp 10kA 1 Pole D Curve MCB
NB1-63-50D1-10K	50 Amp 10kA 1 Pole D Curve MCB
NB1-63-63D1-10K	63 Amp 10kA 1 Pole D Curve MCB



NB1 1 POLE MCB

'D' CURVE 2 POLE

SKU	Variant Name
NB1-63-02D2-10K	2 Amp 10kA 2 Pole D Curve MCB
NB1-63-04D2-10K	4 Amp 10kA 2 Pole D Curve MCB
NB1-63-06D2-10K	6 Amp 10kA 2 Pole D Curve MCB
NB1-63-10D2-10K	10 Amp 10kA 2 Pole D Curve MCB
NB1-63-16D2-10K	16 Amp 10kA 2 Pole D Curve MCB
NB1-63-20D2-10K	20 Amp 10kA 2 Pole D Curve MCB
NB1-63-25D2-10K	25 Amp 10kA 2 Pole D Curve MCB
NB1-63-32D2-10K	32 Amp 10kA 2 Pole D Curve MCB
NB1-63-40D2-10K	40 Amp 10kA 2 Pole D Curve MCB
NB1-63-50D2-10K	50 Amp 10kA 2 Pole D Curve MCB
NB1-63-63D2-10K	63 Amp 10kA 2 Pole D Curve MCB



NB1 2 POLE MCB

'D' CURVE 3 POLE

SKU	Variant Name
NB1-63-02D3-10K	2 Amp 10kA 3 Pole D Curve MCB
NB1-63-04D3-10K	4 Amp 10kA 3 Pole D Curve MCB
NB1-63-06D3-10K	6 Amp 10kA 3 Pole D Curve MCB
NB1-63-10D3-10K	10 Amp 10kA 3 Pole D Curve MCB
NB1-63-16D3-10K	16 Amp 10kA 3 Pole D Curve MCB
NB1-63-20D3-10K	20 Amp 10kA 3 Pole D Curve MCB
NB1-63-25D3-10K	25 Amp 10kA 3 Pole D Curve MCB
NB1-63-32D3-10K	32 Amp 10kA 3 Pole D Curve MCB
NB1-63-40D3-10K	40 Amp 10kA 3 Pole D Curve MCB
NB1-63-50D3-10K	50 Amp 10kA 3 Pole D Curve MCB
NB1-63-63D3-10K	63 Amp 10kA 3 Pole D Curve MCB



NB1 3 POLE MCB

MODULAR DIN RAIL

Surge Arresters

SKU	Variant Name
NU6-111-6KV	6kV Surge Arrester
NU6-11-15KA	15kA (40kA Max) Surge Arrester
NU6-111/F	10kA Surge Arrester
NU6-I-25KA	25kA Surge Arrester
NU6-1-40KA	40kA Surge Arrester



NU6-111/F

Din Mount Contactors

SKU	Variant Name
NCH8-20/11-024	Din Mount 2P 20 amp contactor 24V 1x N/O + 1x N/C
NCH8-20/20	Din Mount 2P 20 amp Contactor 240V 2 x N/O
NCH8-20/11	Din Mount 2P 20 amp Contactor 240V 1x N/O + 1x N/C
NCH8-40/20	Din Mount 40 amp Contactor 240V 2 x N/O
NCH8-25/22	Din Mount 25 amp Contactor 240V 2 x N/O + 2 x N/C
NCH8-25/40	Din Mount 25 amp Contactor 240V 4 x N/O
NCH8-63/40	Din Mount 63 amp Contactor 240V 4 x N/O



NCH8-20/20

Indicators

SKU	Variant Name
ND9-230G	Din Mount LED Indicator 230v Green
ND9-230R	Din Mount LED Indicator 230v Red



ND9-230G

Timers

SKU	Variant Name
NTE8-480A	Din Mount Timer 30-480 seconds



NTE8-480A

MCB/RCD Accessories

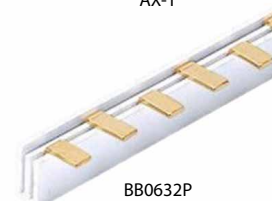
SKU	Variant Name
AX-1	Auxiliary Contacts to suit DZ158 MCB Range
S9048DC	Shunt Trip Unit for NB1 48V D.C.
XF9	Auxiliary Contacts to suit NB1 MCB Range



AX-1

Bus Bars and Endcaps

SKU	Variant Name
BB063A1P	Bus Bar Pin Type 1 Pole 63 Amp
BB063A2P	Bus Bar Pin Type 2 Pole 63 Amp
BB063A3P	Bus Bar Pin Type 3 Pole 63 Amp
BB80A1P	Bus Bar 1 Pole 80A 1M
BB80A2P	Bus Bar 2 Pole 80A 1M
BB80A3P	Bus Bar 3 Pole 80A 1M
CBB-211710	NB2LE Bus Bar 1M
CBB211710	Busbar Endcap
CBB211710	Busbar Endcap
CBB220116	Busbar Endcap
CBB220116	Busbar Endcap
CBB210116	Busbar Endcap
CBB210116	Busbar Endcap
CBB210110	Busbar Endcap
CBB210110	Busbar Endcap
CBB230116	Busbar Endcap
CBB230116	Busbar Endcap
CBB230110	Busbar Endcap
CBB230110	Busbar Endcap

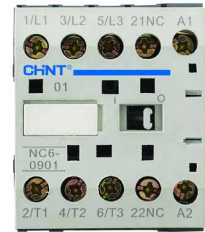


BB0632P

Contactors

NC6 CONTACTORS

SKU	Variant Name
NC6-0901-024	9 Amp Contactor 24V Coil 1 x N/C Aux
NC6-0901-240	9 Amp Contactor 240V Coil 1 x N/C Aux
NC6-0904-024	9 Amp Contactor 24V Coil 4 x N/O Main Contacts
NC6-0904-240	9 Amp Contactor 240V Coil 4 x N/O Main Contacts
NC6-0908-024	9 Amp Contactor 24V Coil 2 x N/C + 2 x N/O Contacts
NC6-0908-240	9 Amp Contactor 240V Coil 2 x N/C + 2 x N/O Contacts
NC6-0910-024	9 Amp Contactor 24V Coil 1 x N/O Aux
NC6-0910-240	9 Amp Contactor 240V Coil 1 x N/O Aux



NC6-0901

NC1 CONTACTORS

SKU	Variant Name
NC1-1201-240	12 Amp Contactor 240V Coil 1 x N/C Aux
NC1-1201-415	12 Amp Contactor 415V Coil 1 x N/C Aux
NC1-1204-024	12 Amp Contactor 24V Coil 4 x N/O Main Contacts
NC1-1204-240	12 Amp Contactor 240V Coil 4 x N/O Main Contacts
NC1-1204Z-24DC	12 Amp Contactor 24V DC Coil 4 x N/O Main Contacts
NC1-1208-110	12 Amp Contactor 110V Coil 2 x N/C + 2 x N/O Contacts
NC1-1208-240	12 Amp Contactor 240V Coil 2 x N/C + 2 x N/O Contacts
NC1-1210-024	12 Amp Contactor 24V Coil 1 x N/O Aux
NC1-1210-110	12 Amp Contactor 110V Coil 1 x N/O Aux
NC1-1210-240	12 Amp Contactor 240V Coil 1 x N/O Aux
NC1-1210-24DC	12 Amp Contactor 3 x N/O + 1 x N/O Aux 24 Volt DC Coil
NC1-1210-415	12 Amp Contactor 415V Coil 1 x N/O Aux
NC1-1210Z-24DC	12 Amp Contactor 24V DC Coil 1 x N/O Aux
NC1-1801-024	18 Amp Contactor 24V Coil 1 x N/C Aux
NC1-1801-110	18 Amp Contactor 110V Coil 1 x N/C Aux
NC1-1801-240	18 Amp Contactor 240V Coil 1 x N/C Aux
NC1-1801-415	18 Amp Contactor 415V Coil 1 x N/C Aux
NC1-1810-024	18 Amp Contactor 24V Coil 1 x N/O Aux
NC1-1810-110	18 Amp Contactor 110V Coil 1 x N/O Aux
NC1-1810-240	18 Amp Contactor 240V Coil 1 x N/O Aux
NC1-1810-415	18 Amp Contactor 415V Coil 1 x N/O Aux
NC1-2501-048	25 amp Contactor 48V Coil 1 x N/C Aux
NC1-2501-240	25 amp Contactor 240V Coil 1 x N/C Aux
NC1-2501-415	25 amp Contactor 415V Coil 1 x N/C Aux
NC1-2504-240	25 amp Contactor 240V Coil 4 x N/O Contacts
NC1-2510-024	25 amp Contactor 24V Coil 1 x N/O Aux
NC1-2510-048	25 amp Contactor 48V Coil 1 x N/O Aux
NC1-2510-110	25 amp Contactor 110V Coil 1 x N/O Aux
NC1-2510-240	25 amp Contactor 240V Coil 1 x N/O Aux
NC1-2510-415	25 amp Contactor 415V Coil 1 x N/O Aux
NC1-2510Z-24DC	25 amp Contactor 24V DC Coil 1 x N/O Aux
NC1-3210-024	32 amp Contactor 24V Coil 1 x N/O Aux
NC1-3210-048	32 amp Contactor 48V Coil 1 x N/O Aux
NC1-3210-240	32 amp Contactor 240V Coil 1 x N/O Aux
NC1-3210-415	32 amp Contactor 415V Coil 1 x N/O Aux
NC1-4008-240	40 amp Contactor 240V Coil 2 x N/O + 2 x N/C Main Contacts
NC1-4011-024	40 amp Contactor 24V Coil 1 x N/O + 1 x N/C Aux
NC1-4011-048	40 amp Contactor 48V Coil 1 x N/O + 1 x N/C Aux
NC1-4011-110	40 amp Contactor 110V Coil 1 x N/O + 1 x N/C Aux
NC1-4011-240	40 amp Contactor 240V Coil 1 x N/O + 1 x N/C Aux
NC1-4011-415	40 amp Contactor 415V Coil 1 x N/O + 1 x N/C Aux



NC1-2510

INDUSTRIAL CONTACTORS AND ACCESSORIES

Contactors continued

NC1 CONTACTORS

SKU	Variant Name
NC1-6511-024	65 amp Contactor 24V Coil 1 x N/O + 1 x N/C Aux
NC1-6511-048	65 amp Contactor 48V Coil 1 x N/O + 1 x N/C Aux
NC1-6511-240	65 amp Contactor 240V Coil 1 x N/O + 1 x N/C Aux
NC1-6511-415	65 amp Contactor 415V Coil 1 x N/O + 1 x N/C Aux
NC1-9504-024	95 amp Contactor 24V Coil 4 x Main Contacts
NC1-9504-240	95 amp Contactor 240V Coil 4 x Main Contacts
NC1-9511-024	95 Amp Contactor 24V Coil 1 x N/O + 1 x N/C Aux
NC1-9511-048	95 Amp Contactor 48V Coil 1 x N/O + 1 x N/C Aux
NC1-9511-110	95 Amp Contactor 110V Coil 1 x N/O + 1 x N/C Aux
NC1-9511-240	95 amp Contactor 240V Coil 1 x N/O + 1 x N/C Aux
NC1-9511-415	95 amp Contactor 415V Coil 1 x N/O + 1 x N/C Aux



NC1-18C415

NC1 Coils

SKU	Variant Name
NC1-18C024	24 Volt Coil for NC1-09 to NC1-18 Contactors
NC1-18C048	48 Volt Coil for NC1-09 to NC1-18 Contactors
NC1-18C240	240 Volt Coil for NC1-09 to NC1-18 Contactors
NC1-18C415	415 Volt Coil for NC1-09 to NC1-18 Contactors
NC1-32C024	24 Volt Coil for NC1-25 to NC1-32 Contactors
NC1-32C048	48 Volt Coil for NC1-25 to NC1-32 Contactors
NC1-32C110	110 Volt Coil for NC1-25 to NC1-32 Contactors
NC1-32C240	240 Volt Coil for NC1-25 to NC1-32 Contactors
NC1-32C415	415 Volt Coil for NC1-25 to NC1-32 Contactors
NC1-95C024	24 Volt Coil for NC1-40 to NC1-95 Contactors
NC1-95C048	48 Volt Coil for NC1-40 to NC1-95 Contactors
NC1-95C110	110 Volt Coil for NC1-40 to NC1-95 Contactors
NC1-95C240	240 Volt Coil for NC1-40 to NC1-95 Contactors
NC1-95C415	415 Volt Coil for NC1-40 to NC1-95 Contactors



NXC-18-240V50/60Hz

Next Series Contactors

SKU	Variant Name
NXC-18-240V50/60Hz	18 Amp Contactor NEXT Series
NXC-50-240V50Hz	50 Amp Contactor NEXT Series
NXC-120-240V	NX Contactor 120 Amp 3 Pole 240 V Coil
NXC-160-240V	NX Contactor 160 Amp 3 Pole 240 V Coil
NXC-160-400V	NX Contactor 160 Amp 3 Pole 400 V Coil



NC2-150

NC2 Contactors

SKU	Variant Name
NC2-115	115 amp Contactor 240V Coil
NC2-150	150 amp Contactor 240V Coil
NC2-185	185 amp Contactor 240V Coil
NC2-225	225 amp Contactor 240V Coil
NC2-265	265 amp Contactor 240V Coil
NC2-330	330 amp Contactor 240V Coil
NC2-400	400 amp Contactor 240V Coil
NC2-500	500 amp Contactor 240V Coil
NC2-630	630 amp Contactor 240V Coil

NC2 Contact Sets

SKU	Variant Name
NC2-115CS	NC2-115 Contact Set
NC2-150CS	NC2-150 Contact Set
NC2-185CS	NC2-185 Contact Set



CONTACT SET

INDUSTRIAL CONTACTORS AND ACCESSORIES

NC2 Contact Sets continued

SKU	Variant Name
NC2-225CS	NC2-225 Contact Set
NC2-265CS	NC2-265 Contact Set
NC2-330CS	NC2-330 Contact Set
NC2-400CS	NC2-400 Contact Set
NC2-500CS	NC2-500 Contact Set
NC2-630CS	NC2-630 Contact Set

NC2 Coils

SKU	Variant Name
NC2-FF-110	NC2-110V Coil to Suit NC2-115 and NC2-150 Contactors
NC2-FF-240	NC2-240V Coil to Suit NC2-115 and NC2-150 Contactors
NC2-FF-415	NC2-415V Coil to Suit NC2-115 and NC2-150 Contactors
NC2-FG-110	NC2-110V Coil to Suit NC2-185 and NC2-225 Contactors
NC2-FG-240	NC2-240V Coil to Suit NC2-185 and NC2-225 Contactors
NC2-FG-415	NC2-415V Coil to Suit NC2-185 and NC2-225 Contactors
NC2-FH-110	NC2-110V Coil to Suit NC2-265 and NC2-330 Contactors
NC2-FH-240	NC2-240V Coil to Suit NC2-265 and NC2-330 Contactors
NC2-FH-415	NC2-415V Coil to Suit NC2-265 and NC2-330 Contactors
NC2-FJ-110	NC2-110V Coil to Suit NC2-400 Contactors
NC2-FJ-240	NC2-240V Coil to Suit NC2-400 Contactors
NC2-FJ-415	NC2-415V Coil to Suit NC2-400 Contactors
NC2-FK-110	NC2-110V Coil to Suit NC2-500 Contactors
NC2-FK-240	NC2-240V Coil to Suit NC2-500 Contactors
NC2-FK-415	NC2-415V Coil to Suit NC2-500 Contactors
NC2-FL-110	NC2-110V Coil to Suit NC2-630 Contactors
NC2-FL-240	NC2-240V Coil to Suit NC2-630 Contactors
NC2-FL-415	NC2-415V Coil to Suit NC2-630 Contactors

NC1 and NC2 Accessories

SKU	Variant Name
F4-22	Auxiliary Contact Block for NC1 & NC2 Contactors (2 x N/C + 2 x N/O)
F5-T2	0.1-30 Second Timer to Suit NC1 & NC2 Contactors
NCF6-22	Auxiliary Contact Block for NC6 Contactors (2 x N/C + 2 x N/O)
NCF1-11C	NC1 Lateral Auxiliary Contacts 1 x N/O + 1 x N/C
NC1-32INT	NC1 09-32 Interlock
NC1-65INT	NC1 40-65 Interlock
NC1-95INT	NC1 95 Interlock
NC2-150INT	NC2 115-150 Interlock
NC2-225INT	NC2 185-225 Interlock

Capacitor (Switching Contactor)

SKU	Variant Name
CJ19-32	15 kVAr Capacitor Switching Contactors
CJ19-63	30 kVAr Capacitor Switching Contactors
CJ19-95	40 kVAr Capacitor Switching Contactors

NC8 Contactors

SKU	Variant Name
NC8-25-240	25 amp Contactor 240V Coil 1 x N/O + 1 x N/C Aux
NC8-25-400	25 amp Contactor 400V Coil 1 x N/O + 1 x N/C Aux
NC8-38-240	38 amp Contactor 240V Coil 1 x N/O + 1 x N/C Aux
NC8-38-400	38 amp Contactor 400V Coil 1 x N/O + 1 x N/C Aux
NC8-100-240	100 Amp Contactor 240V Coil 1 x N/O + 1 x N/C Aux
NC8-100-415	100 Amp Contactor 415V Coil 1 x N/O + 1 x N/C Aux



NC2-FJ-415



INTERLOCK KIT



CJ19

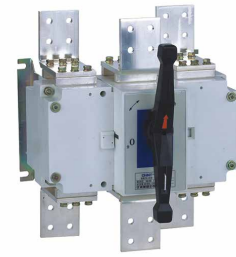


NC8-38-400

INDUSTRIAL CONTACTORS AND ACCESSORIES

Air Conditioning Unit Contactors

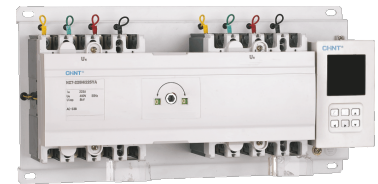
SKU	Variant Name
NCK3-30/2	30 Amp 2 Pole Air Conditioning Unit Contactor 240v Coil



SWITCH DISCONNECTORS

Switch Disconnectors and Changeover Switches

SKU	Variant Name
NH40-125/4CSW	125 Amp 4 Pole Changeover Switch
NH40-160/3	160 Amp 3 Pole Disconnect Switch
NH40-160/4CSW	160 Amp 4 Pole Changeover Switch
NH40-250/4CSW	250 Amp 4 Pole Changeover Switch
NH40-400/3	400 Amp 3 Pole Disconnect Switch
NH40-1000/3	1000 Amp 3 Pole Disconnect Switch
NHR17-160	3 Pole Fuse Disconnect



AUTOMATIC CHANGEOVER SWITCH

Automatic Changeover Switches

SKU	Variant Name
NZ7-125H/4	100 Amp 4 Pole Automatic Transfer Switch
NZ7-250H/4	225 Amp 4 Pole Automatic Transfer Switch
NZ7-630S/4	630 Amp 4 Pole Automatic Transfer Switch

Noark DC Miniature Circuit Breakers

SKU	Variant Name
Ex9BP-2P-K-10A	10 Amp 6kA 2 Pole K Type MCB 500 Volt DC
Ex9BP-2P-K-16A	16 Amp 6kA 2 Pole K Type MCB 500 Volt DC
Ex9BP-2P-K-20A	20 Amp 6kA 2 Pole K Type MCB 500 Volt DC
Ex9BP-2P-K-25A	25 Amp 6kA 2 Pole K Type MCB 500 Volt DC
Ex9BP-2P-K-32A	32 Amp 6kA 2 Pole K Type MCB 500 Volt DC
Ex9BP-2P-K-40A	40 Amp 6kA 2 Pole K Type MCB 500 Volt DC
Ex9BP-2P-K-50A	50 Amp 6 kA 2 Pole K Type MCB 500 Volts DC
Ex9BP-2P-K-63A	63 Amp 6kA 2 Pole K Type MCB 500 Volts DC
Ex9BP-4P-K-10A	10 Amp 6kA 4 Pole K Type MCB 1000 Volt DC
Ex9BP-4P-K-16A	16 Amp 6kA 4 Pole K Type MCB 1000 Volt DC
Ex9BP-4P-K-20A	20 Amp 6kA 4 Pole K Type MCB 1000 Volt DC
Ex9BP-4P-K-32A	32 Amp 6kA 4 Pole K Type MCB 1000 Volt DC



Ex9BP-2P-K-32A

Noark DC Fuse Disconnectors

SKU	Variant Name
Ex9FP-1P	1000 Volt DC Fuse Disconnecter 1 Pole
Ex9FP-2P	1000 Volt DC Fuse Disconnecter 2 Pole



Ex9BP-4P-K-32A

DC Surge Arrestors

SKU	Variant Name
Ex9UP-40-1P-500	500 Volt DC 1 Pole Surge Arrestor
Ex9UP-40-3P-1000	1000 Volt DC 3 Pole Surge Arrestor



Ex8FP-2P

MOULDED CASE CIRCUIT BREAKERS

NM8 Series Adjustable Thermal Magnetic

SKU	Variant Name
NM8N-125S020-3000	20 Amp Moulded Case Circuit Breaker 50kA Thermal Magnetic
NM8N-125S063-3000	63 Amp Moulded Case Circuit Breaker 50kA Thermal Magnetic
NM8N-125R063-3000	63 Amp Moulded Case Circuit Breaker 125kA Thermal Magnetic
NM8N-125R100-3000	100 Amp Moulded Case Circuit Breaker 125kA Thermal Magnetic
NM8N-125S-3000	125 Amp Moulded Case Circuit Breaker 50kA Thermal Magnetic
NM8N-125H-3000	125 Amp Moulded Case Circuit Breaker 100kA Thermal Magnetic
NM8N-250S160-3000	160 Amp Moulded Case Circuit Breaker 50kA Thermal Magnetic
NM8N-250H/160-3001	160 Amp Moulded Case Circuit Breaker 100kA Thermal Magnetic
NM8N-250S/200-3000	200 Amp Moulded Case Circuit Breaker 50kA Thermal Magnetic
NM8N-250S-3000	250 Amp Moulded Case Circuit Breaker 50kA Thermal Magnetic
NM8N-250H-3000	250 Amp Moulded Case Circuit Breaker 100kA Thermal Magnetic
NM8N-250R-3000	250 Amp Moulded Case Circuit Breaker 125kA Thermal Magnetic
NM8N-400S-3000	400 Amp Moulded Case Circuit Breaker 70kA Thermal Magnetic
NM8N-400S-4000	400 Amp Moulded Case Circuit Breaker 70kA Thermal Magnetic
NM8N-400H-3000	400 Amp Moulded Case Circuit Breaker 100kA Thermal Magnetic
NM8N-400R-3300	400 Amp Moulded Case Circuit Breaker 125kA Thermal Magnetic
NM8N-630S500-3000	500 Amp Moulded Case Circuit Breaker 70kA Thermal Magnetic
NM8N-630H500-3000	500 Amp Moulded Case Circuit Breaker 100kA Thermal Magnetic



NM8S-125S-3000

NM8 Series Adjustable Electronic

SKU	Variant Name
NM8S-250S-160	64-160 Amp Moulded Case Circuit Breaker 50kA Electronic
NM8S-250S/100/3	100 Amp Moulded Case Circuit Breaker 50kA Electronic
NM8S-125S-3000	125 Amp Moulded Case Circuit Breaker 50kA Electronic
NM8S-125H-3000	125 Amp Moulded Case Circuit Breaker 70kA Electronic
NM8S-125R-3300	125 Amp Moulded Case Circuit Breaker 100kA Electronic
NM8S-250S-3000	250 Amp Moulded Case Circuit Breaker 50kA Electronic
NM8S-250H-3000	250 Amp Moulded Case Circuit Breaker 70kA Electronic
NM8S-250R-3300	250 Amp Moulded Case Circuit Breaker 100kA Electronic
NM8S-400S-3000	400 Amp Moulded Case Circuit Breaker 70kA Electronic
NM8S-400H-3000	400 Amp Moulded Case Circuit Breaker 100kA Electronic
NM8S-400R-3300	400 Amp Moulded Case Circuit Breaker 125kA Electronic
NM8S-630S-3000	630 Amp Moulded Case Circuit Breaker 70kA Electronic
NM8S-630H-3000	630 Amp Moulded Case Circuit Breaker 100kA Electronic
NM8S-630R-3300	630 Amp Moulded Case Circuit Breaker 125kA Electronic
NM8S-800H-3000	800 Amp Moulded Case Circuit Breaker 70kA Electronic
NM8S-1250H-3000	1250 Amp Moulded Case Circuit Breaker 70kA Electronic



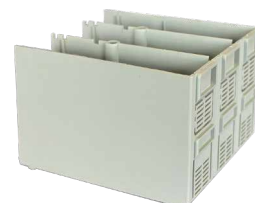
NM8-250H-3000

NM8 DC MCCB

SKU	Variant Name
NM8NDC-250S TM 250 4P	250 Amp 4 Pole DC MCCB

NM8 Terminal Covers

SKU	Variant Name
NM8-125TCD	Deep Terminal Cover to Suit NM8-125
NM8-1TCD	Deep Terminal Cover to Suit NM8 Frame Size 1
NM8-2TCD	Deep Terminal Cover to suit NM8 Frame Size 2
NM8-1TCS	Short Terminal Cover to Suit NM8 Frame Size 1
NM8-2TCS	Short Terminal Cover to suit NM8 Frame Size 2



TERMINAL COVER

MOULDED CASE CIRCUIT BREAKERS

NM8 Shunt Release

SKU	Variant Name
NM8-SR125-240	NM8 Shunt Release 240v for NM8-125
NM8-SR630-240	NM8 Shunt Release 240v for NM8-NMS125 to 250amp
NM8-SR250-240	NM8 Shunt Release 240v for NM8-NMS400 to 630amp



SHUNT RELEASE

NM8 Auxiliary Contacts

SKU	Variant Name
NM8-ACL	NM8 Auxiliary Contact Left
NM8-ACR	NM8 Auxiliary Contact Right



AUXILIARY CONTACT

NM8 Rotary Handles

SKU	Variant Name
NM8-125RH	Rotary Handle Kit to Suit 125 Amp NM8
NM8-250RH	Rotary Handle Kit to Suit 250 Amp NM8
NM8-630RH	Rotary Handle Kit to Suit 400-630 Amp NM8



ROTARY HANDLE

NM8 Rear Connection Kits

SKU	Variant Name
NM8-250RCK	Rear Connection Kit to Suit 125-250 Amp Frame Size 1
NM8-630RCK	Rear Connection Kit to Suit 400-630 Amp Frame Size 2

NM8 Motor Mechanisms

SKU	Variant Name
NM8-MM-125	Motor Mechanism 240V 125 Amp
NM8-MM-250	Motor Mechanism 240V 250 Amp
NM8-MM-400	Motor Mechanism 240V 400 Amp
NM8-MM-630	Motor Mechanism 240V 630 Amp
NM8-MM-800	Motor Mechanism 240V 800 Amp
NM8-MM-1250	Motor Mechanism 240V 1250 Amp



MOTOR MECHANISM

NX Series Adjustable Thermal Magnetic

SKU	Variant Name
NXM-125H/3300 63A	63 Amp 3 Pole Moulded Case Circuit Breaker Thermal Magnetic 50kA
NXM-125H/3300 100A	100 Amp 3 Pole Moulded Case Circuit Breaker Thermal Magnetic 50kA
NXM-125H/3300 125A	125 Amp 3 Pole Moulded Case Circuit Breaker Thermal Magnetic 50kA
NXM-250H/3300 160A	160 Amp 3 Pole Moulded Case Circuit Breaker Thermal Magnetic 50kA
NXM-250H/3300 200A	200 Amp 3 Pole Moulded Case Circuit Breaker Thermal Magnetic 50kA
NXM-250H/3300 250A	250 Amp 3 Pole Moulded Case Circuit Breaker Thermal Magnetic 50kA
NXM-400H/3300 400A	400 Amp 3 Pole Moulded Case Circuit Breaker Thermal Magnetic 70kA
NXM-630H/3300 500A	500 Amp 3 Pole Moulded Case Circuit Breaker Thermal Magnetic 70kA
NXM-630H/3300 630A	630 Amp 3 Pole Moulded Case Circuit Breaker Thermal Magnetic 70kA
NXM-1000H/3300 1000A	1000 Amp 3 Pole Moulded Case Circuit Breaker Thermal Magnetic 70kA
NXM-1600H/3300T 1600A	1600 Amp 3 Pole Moulded Case Circuit Breaker Thermal Magnetic 70kA



NXM-400H/3300 400A

NX Series Adjustable Electronic

SKU	Variant Name
NXMS-250H/3300 250A	250 Amp 3 Pole Moulded Case Circuit Breaker Electronic 50kA
NXMS-400S/3300 400A	400 Amp 3 Pole Moulded Case Circuit Breaker Electronic 70kA
NXMS-630H/3300 630A	630 Amp 3 Pole Moulded Case Circuit Breaker Electronic 70kA



NX Series MCCBs

MOULDED CASE CIRCUIT BREAKERS

NXM Shunt Release

SKU	Variant Name
SHT125AC230	Shunt Release for NXM-125 Amp MCCB 230V
SHT-M3/A1R	Shunt Release for NXM-250 Amp MCCB 230V
SHT-M4/A1R	Shunt Release for NXM-630Amp MCCB 230V

NXM Auxiliary Contacts

SKU	Variant Name
AX-M3 L	Auxiliary Contact Block for NXM250 MCCB
AX-M4 L	Auxiliary Contact Block for NXM630 MCCB

NXM Rotary Handles

SKU	Variant Name
ERH-M1	Rotary Handle for NXM Series Frame Size 1
ERH-M2	Rotary Handle for NXM Series Frame Size 2
ERH-M3	Rotary Handle for NXM Series Frame Size 3
ERH-M4	Rotary Handle for NXM Series Frame Size 4



SHT125AC230



ERH-M3

MOTOR STARTERS

DOL Motor Starter (With Enclosure)

SKU	Variant Name
NQ3-5.5P/9-13	9-13 amp DOL Motor Starter
NQ3-11P/17-25	17-25 amp DOL Motor Starter

Different sizes and voltages available upon request

DOL Motor Starter (Without Enclosure)

SKU	Variant Name
NS2-25/0.4	0.4 amp Thermal Magnetic Motor Starter
NS2-25/0.63	0.63 amp Thermal Magnetic Motor Starter
NS2-25/1	1.0 amp Thermal Magnetic Motor Starter
NS2-25/1.6	1.6 amp Thermal Magnetic Motor Starter
NS2-25/2.5	2.5 amp Thermal Magnetic Motor Starter
NS2-25/4	4.0 amp Thermal Magnetic Motor Starter
NS2-25/6.3	6.3 amp Thermal Magnetic Motor Starter
NS2-25/10	10 amp Thermal Magnetic Motor Starter
NS2-25/14	14 amp Thermal Magnetic Motor Starter
NS2-25/18	18 amp Thermal Magnetic Motor Starter
NS2-25/23	23 amp Thermal Magnetic Motor Starter
NS2-25/25	25 amp Thermal Magnetic Motor Starter
NS2-80/40	25-40 amp Thermal Magnetic Motor Starter
NS2-80/63	40-63 amp Thermal Magnetic Motor Starter
NS2-80/80	56-80 amp Thermal Magnetic Motor Starter



NQ3-5.5P/9-13



NS2-25/2.5

Accessories

SKU	Variant Name
NS2-AE11	Auxiliary Contact Block 1 x N/O + 1 x N/C Top Mount
NS2-AE20	Auxiliary Contact Block 2 x N/O Top Mount
NS2-AU11	Auxiliary Contact Block 1 x N/O + 1 x N/C Side Mount
NS2-AU20	Auxiliary Contact Block 2 x N/O Side Mount
NS2-MC	NS2 Motor Starter Enclosure
NS2-MC01	NS2 Motor Starter Enclosure with Emergency Stop
NS2-UV220	220V-240V Under Voltage Release
NS2-UV380	380V-400V Under Voltage Release66.10



NS2-MC01

MOTOR OVERLOADS

Electronic Motor Overloads

SKU	Variant Name
NRE8-25/1.2	Use with NC1-09 to NC1-32 Contactors (0.6 - 1.2 amp)
NRE8-25/2.4	Use with NC1-09 to NC1-32 Contactors (1.2 - 2.4 amp)
NRE8-25/4	Use with NC1-09 to NC1-32 Contactors (2.4 - 4 amp)
NRE8-25/8	Use with NC1-09 to NC1-32 Contactors (4.0 - 8.0 amp)
NRE8-25/10	Use with NC1-09 to NC1-32 Contactors (5.0 - 10 amp)
NRE8-25/12	Use with NC1-09 to NC1-32 Contactors (7.0 - 12 amp)
NRE8-25/20	Use with NC1-09 to NC1-32 Contactors (10 - 20 amp)
NRE8-25/25	Use with NC1-09 to NC1-32 Contactors (20 - 25 amp)
NRE8-25/32	Use with NC1-09 to NC1-32 Contactors (22 - 32 amp)
NRE8-40/20	Use with NC1-40 Contactors (10 - 20 amp)
NRE8-40/40	Use with NC1-40 Contactors (20 - 40 amp)
NRE8-100/65	Use with NC1-40 - NC1-95 Contactors (30 - 65 amp)
NRE8-100/100	Use with NC1-40 - NC1-95 Contactors (50 - 100 amp)



NRE8-100/65

Thermal Overloads

SKU	Variant Name
NR2-11.5/16	Use with NC6 and NC1-12 to NC1-18 Contactors (0.10 - 0.16 amp)
NR2-11.5/25	Use with NC6 and NC1-12 to NC1-18 Contactors (0.16 - 0.25 amp)
NR2-11.5/0.4	Use with NC6 and NC1-12 to NC1-18 Contactors (0.25 - 0.4 amp)
NR2-11.5/0.63	Use with NC6 and NC1-12 to NC1-18 Contactors (0.4 - 0.63 amp)
NR2-11.5/1	Use with NC6 and NC1-12 to NC1-18 Contactors (0.63 - 1.0 amp)
NR2-11.5/1.6	Use with NC6 and NC1-12 to NC1-18 Contactors (1.0 - 1.6 amp)
NR2-11.5/2	Use with NC6 and NC1-12 to NC1-18 Contactors (1.25 - 2.0 amp)
NR2-11.5/2.5	Use with NC6 and NC1-12 to NC1-18 Contactors (1.9 - 2.5 amp)
NR2-11.5/4	Use with NC6 and NC1-12 to NC1-18 Contactors (2.5 - 4.0 amp)
NR2-11.5/6	Use with NC6 and NC1-12 to NC1-18 Contactors (4.0 - 6.0 amp)
NR2-11.5/8	Use with NC6 and NC1-12 to NC1-18 Contactors (5.5 - 8.0 amp)
NR2-11.5/10	Use with NC6 and NC1-12 to NC1-18 Contactors (7.0 - 10.0 amp)
NR2-25/4	Use with NC1-12 to NC1-32 Contactors (2.5 - 4.0 amp)
NR2-25/6	Use with NC1-12 to NC1-32 Contactors (4.0 - 6.0 amp)
NR2-25/8	Use with NC1-12 to NC1-32 Contactors (5.5 - 8.0 amp)
NR2-25/10	Use with NC1-12 to NC1-32 Contactors (7.0 - 10 amp)
NR2-25/13	Use with NC1-12 to NC1-32 Contactors (9.0 - 13 amp)
NR2-25/18	Use with NC1-12 to NC1-32 Contactors (12 - 18 amp)
NR2-25/25	Use with NC1-12 to NC1-32 Contactors (17 - 25 amp)
NR2-36/32	Use with NC1-32 Contactors (23 - 32 amp)
NR2-36/36	Use with NC1-32 Contactors (28 - 36 amp)
NR2-93/32	Use with NC1-40 to NC1-95 Contactors (23 - 32 amp)
NR2-93/40	Use with NC1-40 to NC1-95 Contactors (30 - 40 amp)
NR2-93/50	Use with NC1-40 to NC1-95 Contactors (37 - 50 amp)
NR2-93/65	Use with NC1-40 to NC1-95 Contactors (48 - 65 amp)
NR2-93/80	Use with NC1-40 to NC1-95 Contactors (63 - 80 amp)
NR2-93/93	Use with NC1-40 to NC1-95 Contactors (80 - 93 amp)
NR2-200/160	Use with NC2-185 to NC2-630 Contactors (100 - 160 amp)
NR2-200/200	Use with NC2-185 to NC2-630 Contactors (160 - 200 amp)
NR2-630/250	Use with NC2-185 to NC2-630 Contactors (160 - 250 amp)
NR2-630/400	Use with NC2-185 to NC2-630 Contactors (250 - 400 amp)



NR2-25/10

PUSH BUTTONS, LOCKING SWITCHES AND SIGNAL LIGHTS

NP2 Metal Base Range

SKU	Variant Name
NP2-BA25	Push Button (Black) 1 x N/O + 1 x N/C Contacts
NP2-BA35	Push Button (Green) 1 x N/O + 1 x N/C Contacts
NP2-BA45	Push Button (Red) 1 x N/O + 1 x N/C Contacts
NP2-BD21	2 Position Locking Switch 1 x N/O Contact
NP2-BJ21	2 Position Locking Switch 1 x N/O Contact
NP2-BD25	2 Position Locking Switch 1 x N/O + 1 x N/C Contacts
NP2-BD33	3 Position Locking Switch 2 x N/O Contacts
NP2-BD45	2 Position Restoration Switch 1 x N/O + 1 x N/C Contacts
NP2-BD53	3 Position Restoration Switch 1 x N/O + 1 x N/C Contacts
NP2-BG25	2 Position Locking Key Switch 1 x N/O + 1 x N/C Contacts
NP2-BG33	3 Position Locking Key Switch 1 x N/O + 1 x N/C Contacts
NP2-B542	Self Locking Emergency Stop Button 1 x N/C Contacts
NP2-B5545	Self Locking Emergency Stop Button 1x N/O + 1 x N/C Contacts
NP2-BC45	Self Restoration Emergency Stop Button 1 x N/O + 1 x N/C
NP2-BW3165	Illuminated Push Button (White) 1 x N/O + 1 x N/C
NP2-BW3365	Illuminated Push Button (Green) 1 x N/O + 1 x N/C Contacts
NP2-BW3465	Illuminated Push Button (Red) 1 x N/O + 1 x N/C Contacts



NP2-BS



NP2-BD

NP2 Plastic Base Range

SKU	Variant Name
NP2-EA25	Push Button (Black) 1 x N/O + 1 x N/C Contacts
NP2-EA35	Push Button (Green) 1 x N/O + 1 x N/C Contacts
NP2-EA45	Push Button (Red) 1 x N/O + 1 x N/C Contacts
NP2-ED21	2 Position Locking Switch 1 x N/O Contact
NP2-EJ21	2 Position Locking Switch 1 x N/O Contact
NP2-ED25	2 Position Locking Switch 1 x N/O + 1 x N/C Contacts
NP2-ED33	3 Position Locking Switch 2 x N/O Contacts
NP2-EJ33	3 Position Locking Switch 1 x N/O + 1 x N/C Contacts
NP2-ED45	2 Position Restoration Switch 1 x N/O + 1 x N/C Contacts
NP2-ED53	3 Position Restoration Switch 1 x N/O + 1 x N/C Contacts
NP2-EG21	2 Position Locking Key Switch 1 x N/O Contact
NP2-EG25	2 Position Locking Key Switch 1 x N/O + 1 x N/C Contacts
NP2-EG33	3 Position Locking Key Switch 1 x N/O + 1 x N/C Contacts
NP2-E542	Self Locking Emergency Stop Button 1 x N/C Contact
NP2-E5545	Self Locking Emergency Stop Button 1 x N/O + 1 x N/C Contacts
NP2-EC45	Self Restoration Emergency Stop Pushbutton 1 x N/O + 1 x N/C
NP2-EV61	Signal Light (White) 240V
NP2-EV63	Signal Light (Green) 240V
NP2-EV64	Signal Light (Red) 240V
NP2-EV65	Signal Light (Yellow) 240V
NP2-EW3165	Illuminated Push Button (White) 1 x N/O + 1 x N/C Contacts
NP2-EW3365	Illuminated Push Button (Green) 1 x N/O + 1 x N/C Contacts
NP2-EW3465	Illuminated Push Button (Red) 1 x N/O + 1 x N/C Contacts



NP2-EG



NP2-EW

NP2 Contacts

SKU	Variant Name
NP2-BE101	Contact Block N/O
NP2-BE102	Contact Block N/C
NP2-L1111	Contact Block N/O Rear Fixing Type
NP2-L1121	Contact Block N/C Rear Fixing Type



NP2-BE101

PUSH BUTTONS, LOCKING SWITCHES AND SIGNAL LIGHTS

NP2 Enclosures

SKU	Variant Name
NPH1-10	Single Hole Enclosure
NPH1-20	Double Hole Enclosure
NP2-B03	Triple Hole Enclosure
NPH1-1001	Start Station Complete
NP2-B215	Stop/Start Station Complete
NP2-J174	Emergency Stop Station Complete



NP2-B03

NP2 Labels

SKU	Variant Name
NP2-BY9330	NP2 Label - Emergency Stop 60mm
NP2-BZ31	NP2 Label - Holder
NP2-L/RESET	NP2 Label RESET
NP2-L/START	NP2 Label START
NP2-L/STOP	NP2 Label STOP

Different sizes and voltages available upon request



NP2-BY9330

NP8 Range

SKU	Variant Name
NP8-11X-21B	2 Position Locking Switch 1 x N/O + 1 x N/C Contacts (Black)
NP8-11X-21R	2 Position Locking Switch 1 x N/O + 1 x N/C Contacts (Red)
NP8-11X-31B	3 Position Locking Switch 1 x N/O + 1 x N/C Contacts (Black)
NP8-11X-31R	3 Position Locking Switch 1 x N/O + 1 x N/C Contacts (Red)
NP8-10Y-21	2 Position Locking Key Switch 1 x N/O Contact
NP8-11Y-21	2 Position Locking Key Switch 1 x N/O + 1 x N/C Contacts (Black)
NP8-20Y-31	3 Position Locking Key Switch 2 x N/O Contacts
NP8-11Y-31	3 Position Locking Key Switch 1 x N/O + 1 x N/C Contacts
NP8-20X-31B	3 Position Locking Switch 2 x N/O Contacts (Black)
NP8-11ZS-1	Self Locking Emergency Stop Button 1 x N/O + 1 x N/C Contacts
NP8-11BNDB240	Illuminated Push Button (Blue) 1 x N/O + 1 x N/C Contacts 110-240V
NP8-11BNDB36	Illuminated Push Button (Blue) 1 x N/O + 1 x N/C Contacts 6-36V
NP8-11BNDG240	Illuminated Push Button (Green) 1 x N/O + 1 x N/C Contacts 110-240V
NP8-11BNDG36	Illuminated Push Button (Green) 1 x N/O + 1 x N/C Contacts 6-36V
NP8-11BNDR240	Illuminated Push Button (Red) 1 x N/O + 1 x N/C Contacts 110-240V
NP8-11BNDR36	Illuminated Push Button (Red) 1 x N/O + 1 x N/C Contacts 6-36V
NP8-11BNDW240	Illuminated Push Button (White) 1 x N/O + 1 x N/C Contacts 110-240V
NP8-11BNDW36	Illuminated Push Button (White) 1 x N/O + 1 x N/C Contacts 6-36V
NP8-11BNDY240	Illuminated Push Button (Yellow) 1 x N/O + 1 x N/C Contacts 110-240V
NP8-11BNDY36	Illuminated Push Button (Yellow) 1 x N/O + 1 x N/C Contacts 6-36V
NP8-20BNDB240	Illuminated Push Button (Blue) 2 X N/O Contacts 110-240V
NP8-20BNDG240	Illuminated Push Button (Green) 2 X N/O Contacts 110-240V
NP8-20BNDR240	Illuminated Push Button (Red) 2 X N/O Contacts 110-240V
NP8-20BNDW240	Illuminated Push Button (White) 2 X N/O Contacts 110-240V
NP8-DB230	LED Signal Light (Blue) 110-230V
NP8-DB36	LED Signal Light (Blue) 6-36V
NP8-DG230	LED Signal Light (Green) 110-230V
NP8-DG36	LED Signal Light (Green) 6-36V
NP8-DR230	LED Signal Light (Red) 110-230V
NP8-DR36	LED Signal Light (Red) 6-36V



NP8-11X



NP8-DG

PUSH BUTTONS, LOCKING SWITCHES AND SIGNAL LIGHTS

NP8 Range continued

SKU	Variant Name
NP8-DW230	LED Signal Light (White) 110-230V
NP8-DW36	LED Signal Light (White) 6-36V
NP8-DY230	LED Signal Light (Yellow) 110-230V
NP8-DY36	LED Signal Light (Yellow) 6-36V
NP8-10BN1	Push Button (White) 1 x N/O Contact
NP8-10BN2	Push Button (Black) 1 x N/O Contact
NP8-10BN3	Push Button (Green) 1 x N/O Contact
NP8-10BN4	Push Button (Red) 1 x N/O Contact
NP8-10BN5	Push Button (Yellow) 1 x N/O Contact
NP8-10BN6	Push Button (Blue) 1 x N/O Contact
NP8-11BN-2	Push Button (Black) 1 x N/O + 1 x N/C Contacts
NP8-11BN-3	Push Button (Green) 1 x N/O + 1 x N/C Contacts
NP8-11BN-4	Push Button (Red) 1 x N/O + 1 x N/C Contacts
NP8-11BN-6	Push Button (Blue) 1 x N/O + 1 x N/C Contacts
NP8-20BN-3	Push Button (Green) 2 x N/O Contacts



NP8-10BN



NP8-BE101

NP8 Contacts

SKU	Variant Name
NP8-BE101	Contact Block N/O
NP8-BE102	Contact Block N/C

NP2 LED Lamps

SKU	Variant Name
BA9LED-G012	BA9 LED Lamp 12V (Green)
BA9LED-G024	BA9 LED Lamp 24V (Green)
BA9LED-G036	BA9 LED Lamp 36V (Green)
BA9LED-G048	BA9 LED Lamp 48V (Green)
BA9LED-G110	BA9 LED Lamp 110V (Green)
BA9LED-G240	BA9 LED Lamp 240V (Green)
BA9LED-R012	BA9 LED Lamp 12V (Red)
BA9LED-R024	BA9 LED Lamp 24V (Red)
BA9LED-R036	BA9 LED Lamp 36V (Red)
BA9LED-R048	BA9 LED Lamp 48V (Red)
BA9LED-R110	BA9 LED Lamp 110V (Red)
BA9LED-R240	BA9 LED Lamp 240V (Red)
BA9LED-W012	BA9 LED Lamp 12V (White)
BA9LED-W024	BA9 LED Lamp 24V (White)
BA9LED-W036	BA9 LED Lamp 36V (White)
BA9LED-W048	BA9 LED Lamp 48V (White)
BA9LED-W110	BA9 LED Lamp 110V (White)
BA9LED-W240	BA9 LED Lamp 240V (White)
BA9LED-Y012	BA9 LED Lamp 12V (Yellow)
BA9LED-Y024	BA9 LED Lamp 24V (Yellow)
BA9LED-Y036	BA9 LED Lamp 36V (Yellow)
BA9LED-Y048	BA9 LED Lamp 48V (Yellow)
BA9LED-Y110	BA9 LED Lamp 110V (Yellow)
BA9LED-Y240	BA9 LED Lamp 240V (Yellow)
BA9LED-B240	BA9 LED Lamp 240V (Blue)



BA9LED-R

PUSH BUTTONS, LOCKING SWITCHES AND SIGNAL LIGHTS

ND16 LED Indicator Range

SKU	Variant Name
ND16-22D/2K2-G240	Signal Light (Green) 240V AC LED (Suppressed Type)
ND16-22D/2K2-R240	Signal Light (Red) 240V AC LED (Suppressed Type)
ND16-22D/2K2-W240	Signal Light (White) 240V AC LED (Suppressed Type)
ND16-22DS-2B012	Signal Light (Blue) 12V AC or DC LED
ND16-22DS-2B024	Signal Light (Blue) 24V AC or DC LED
ND16-22DS-2G012	Signal Light (Green) 12V AC or DC LED
ND16-22DS-2G024	Signal Light (Green) 24V AC or DC LED
ND16-22DS-2G048	Signal Light (Green) 48V AC or DC LED
ND16-22DS-2G240	Signal Light (Green) 240V AC or DC LED
ND16-22DS-2R012	Signal Light (Red) 12V AC or DC LED
ND16-22DS-2R024	Signal Light (Red) 24V AC or DC LED
ND16-22DS-2R048	Signal Light (Red) 48V AC or DC LED
ND16-22DS-2W012	Signal Light (White) 12V AC or DC LED
ND16-22DS-2W024	Signal Light (White) 24V AC or DC LED
ND16-22DS-2W048	Signal Light (White) 24V AC or DC LED
ND16-22DS-2W240	Signal Light (White) 240V AC or DC LED
ND16-22DS-2Y012	Signal Light (Yellow) 12V AC or DC LED
ND16-22DS-2Y024	Signal Light (Yellow) 24V AC or DC LED
ND16-22DS-4B240	Signal Light (Blue) 240V AC LED
ND16-22DS-4G110	Signal Light (Green) 110V AC LED
ND16-22DS-4G240	Signal Light (Green) 240V AC LED
ND16-22DS-4R110	Signal Light (Red) 110V AC LED
ND16-22DS-4R240	Signal Light (Red) 240V AC LED
ND16-22DS-4W110	Signal Light (White) 110V AC LED
ND16-22DS-4W240	Signal Light (White) 240V AC LED
ND16-22DS-4Y240	Signal Light (Yellow) 240V act LED
ND16-22D/4(R)400V	Signal Light (Red) 400v AC
ND16-22D/4(G)400V	Signal Light (Green) 400v AC
ND16-22D/4(W)400V	Signal Light (WHITE) 400v AC



ND16-22DS-2G024

RELAYS AND BASES

Relay Bases

SKU	Variant Name
CZY11B	5 Amp 2 Pole NJX Relay Base
CZT08A	10 Amp 2 Pole NJX Relay Base
CZY08A	5 Amp 3 Pole NJX Relay Base
CZF11A	11 Amp 3 Pole JQX Relay Base
CZY14B	3 Amp 4 Pole NJX Relay Base
NXJ-A24V-2ZH1D	10 Amp 2 Pole Relay 24V AC NEXT Series
NXJ-A240V-2ZH1D	10 Amp 2 Pole Relay 240V AC NEXT Series
NXJ-24V-2Z1D	5 Amp 2 Pole Relay 24VDC NEXT Series
NXJ-12V-2ZH1D	10 Amp 2 Pole Relay 12VDC NEXT Series
RS-NXJ-2ZHC2	10 Amp 2 Pole Relay Base NEXT Series
NXJ-2Z/C2	5 Amp 2 Pole Relay Base NEXT Series



CZ RELAY BASE

RELAYS AND BASES

Relays

SKU	Variant Name
NJX-13FWD240VAC2ZS	5 Amp 2 Pole Relay 240V
NJX-13FWD012VDC2Z	10 Amp 2 Pole Relay 12V DC
NJX-13FWD024VDC2Z	10 Amp 2 Pole Relay 24V DC
NJX-13FWD240VAC2Z6	10 Amp 2 Pole Relay 240V
JQX-10F/012-DC-2Z	10 Amp 2 Pole Relay 12V DC
JQX-10F/012-DC-3Z	10 Amp 3 Pole Relay 12V DC
JQX-10F/024-DC-2Z	10 Amp 2 Pole Relay 24V DC
JQX-10F/024-DC-3Z	10 Amp 3 Pole Relay 24V DC
JQX-10F/048-DC-3Z	10 Amp 3 Pole Relay 48V DC
JQX-10F/110-DC-3Z	10 Amp 3 Pole Relay 110V DC



NJX RELAY

POWER FACTOR CORRECTION CAPACITORS

SKU	Variant Name
BZMJ0.450-15-3	Capacitor 15kVAr at 450V
BZMJ0.525-15-3	Capacitor 15kVAr at 525V
BZMJ0.525-35-3	Capacitor 35kVAr at 525V
NWC5-0525-7.5-3	7.5kVAr 525V Capacitors
NWC5-0525-12-3	12kVAr 525 V Capacitors
NWC5-0525-14-3	14kVAr 525V Capacitors
NWC5-0525-16-3	16kVAr 525V Capacitors
NWC5-0525-18-3	18kVAr 525V Capacitors
NWC1-0525-20-3	20kVAr 525 V Capacitors
NWC5-0525-25-3	25kVAr 525V Capacitors
NWC1-0525-30-3	30kVAr 525 V Capacitors
NWC1-0525-40-3	40kVAr 525 V Capacitors



BZMJ CAPACITOR



NWC5 CAPACITOR

POWER FACTOR CORRECTION CONTROLLER

SKU	Variant Name
JKF8/12	12 Step Automatic Power factor Correction Controller



JKF8/12

SMART METER

SKU	Variant Name
DDSU666	Din Rail kWh Meter 80 amp Single Phase 230 V



DDSU666

SECTION TWO

IP66 Series



IP RATED SERIES

Light Switches

SINGLE SWITCH AND BASE

Part No:	Description	Amps	IP Rating	Size (mm)
WSC225/1	Single Gang Surface Mount Light Switch	15 Amp	IP56	83W x 83H x 57D



WSC225/1

DOUBLE SWITCH AND BASE

Part No:	Description	Amps	IP Rating	Size (mm)
WSC225/2	Double Gang Surface Mount Light Switch	15 Amp	IP56	83W x 83H x 57D

Inlet

Part No:	Description	Amps	Voltage	IP Rating	Size (mm)
66AI310	10 Amp Socket Inlet 3x Flat Pins IP66	10 Amp	250 Volt	IP66	100W x 100H x 75D



66SW363

Isolating Switch and Base (Rotary type)

SINGLE PHASE

Part No:	Description	Amps	Voltage	IP Rating	Size (mm)
66SW115	15 Amp Isolating Switch 1 Pole	15 Amp	250 Volt	IP66	100W x 100H x 83D
66SW120	20 Amp Isolating Switch 1 Pole	20 Amp	250 Volt	IP66	100W x 100H x 83D
66SW132	32 Amp Isolating Switch 1 Pole	32 Amp	250 Volt	IP66	100W x 100H x 83D
66SW163	63 Amp Isolating Switch 1 Pole	63 Amp	250 Volt	IP66	100W x 100H x 83D



UKF4-220

THREE PHASE

Part No:	Description	Amps	Voltage	IP Rating	Size (mm)
66SW332	32 Amp Isolating Switch 3 Pole	32 Amp	500 Volt	IP66	100W x 100H x 83D
66SW363	63 Amp Isolating Switch 3 Pole	63 Amp	500 Volt	IP66	100W x 100H x 83D

Isolating Switch and Base (Lever type)

SINGLE PHASE

Part No:	Description	Amps	Voltage	IP Rating	Size (mm)
UKF4-120	20 Amp Isolating Switch 1 Pole	20 Amp	250 Volt	IP66	86W x 86H x 70D
UKF4-220	20 Amp Isolating Switch 2 Pole	20 Amp	250 Volt	IP66	86W x 86H x 70D
UKF2-135	35 Amp Isolating Switch 1 Pole	35 Amp	250 Volt	IP66	83W x 160H X 70D



UKF2-363

THREE PHASE

Part No:	Description	Amps	Voltage	IP Rating	Size (mm)
UKF2-335	35 Amp Isolating Switch 3 Pole	35 Amp	250 Volt	IP66	83W x 160H X 70D
UKF2-363	63 Amp Isolating Switch 3 Pole	63 Amp	250 Volt	IP66	83W x 160H X 70D

Power Points

SINGLE SWITCH AND BASE

Part No:	Description	Amps	IP Rating	Size (mm)
WSC228/1	Single Power Point Surface Mount	10 Amp	IP53	112W x 80H x 80D
WSC227/1	Single Power Point Surface Mount	15 Amp	IP53	112W x 80H x 80D



WSC228/1

DOUBLE SWITCH AND BASE

Part No:	Description	Amps	IP Rating	Size (mm)
WSC228/2	Double Power Point Surface Mount	10 Amp	IP53	112W x 80H x 80D
WSC227/2	Double Power Point Surface Mount	15 Amp	IP53	112W x 80H x 80D

IP66 SERIES

IP66 Enclosures

Part No:	Description	Size (mm)
IPBOX77x77	IP Rated Enclosure	77W x 77H x 76D
IPBOX108x108	IP Rated Enclosure	108W x 108H x 76D
IPBOX211x108	IP Rated Enclosure	211W x 108H x 76D



IPBOX108x108

IP Rated 4 Pole MCB Cover

Part No:	Description	Size (mm)
56CB1-4N/LB	4 Pole MCB and RCD Cover IP66	95W x 193H x 45D



56CB1-4N/LB

Bases

Part No:	Description	IP Rating	Size (mm)
66E1	1 Gang Base	IP66	100W x 100H x 63D
66E2	2 Gang Base	IP66	100W x 200H x 63D
66E3	3 Gang Base	IP66	100W x 300H x 60D
66E4	4 Gang Base	IP66	200W x 200H x 60D

Enclosure Lids

Part No:	Description	IP Rating	Size (mm)
66L1	66 Series E1 Lid Only	IP66	100W x 100H x 30D
66L2	66 Series E2 Lid Only	IP66	100W x 200H x 30D
66L3	66 Series E3 Lid Only	IP66	100W x 300H x 30D
66L4	66 Series E4 Lid Only	IP66	200W x 200H x 30D



66E2

Switched Socket and Base

SINGLE PHASE

Part No:	Description	Amps	Voltage	IP Rating	Size (mm)
66CV310	10 Amp Switched Socket 3 x Flat Pins	10 Amp	250 Volt	IP66	100W x 200H x 83D
66CV315	15 Amp Switched Socket 3 x Flat Pins	15 Amp	250 Volt	IP66	100W x 200H x 83D
66CV320	20 Amp Switched Socket 3 x Round Pins	20 Amp	250 Volt	IP66	100W x 200H x 83D
66CV332	32 Amp Switched Socket 3 x Round Pins	32 Amp	250 Volt	IP66	100W x 200H x 83D



E1 LID

THREE PHASE

Part No:	Description	Amps	Voltage	IP Rating	Size (mm)
66CV420	20 Amp Switched Socket 4 x Round Pins	20 Amp	500 Volt	IP66	100W x 200H x 83D
66CV520	20 Amp Switched Socket 5 x Round Pins	20 Amp	500 Volt	IP66	100W x 200H x 83D
66CV432	32 Amp Switched Socket 4 x Round Pins	32 Amp	500 Volt	IP66	100W x 200H x 83D
66CV532	32 Amp Switched Socket 5 x Round Pins	32 Amp	500 Volt	IP66	100W x 200H x 83D
66CV450	50 Amp Switched Socket 4 x Round Pins	50 Amp	500 Volt	IP66	100W x 200H x 83D
66CV550	50 Amp Switched Socket 5 x Round Pins	50 Amp	500 Volt	IP66	100W x 200H x 83D



66CV315

IP66 SERIES

Socket and Base

SINGLE PHASE

Part No:	Description	Amps	Voltage	IP Rating	Size (mm)
66SOA310	10 amp Autoswitching	10 Amp	250 Volt	IP66	100W x 100H x 83D
66SO310	10 Amp Socket Outlet 3 x Flat Pins	10 Amp	250 Volt	IP66	100W x 100H x 83D
66SOA315	15 amp Autoswitching	15 Amp	250 Volt	IP66	100W x 100H x 83D
66SO315	15 Amp Socket Outlet 3 x Flat Pins	15 Amp	250 Volt	IP66	100W x 100H x 83D
66SO320	20 Amp Socket Outlet 3 x Round Pins	20 Amp	250 Volt	IP66	100W x 100H x 83D
66SO332	32 Amp Socket Outlet 3 x Round Pins	32 Amp	250 Volt	IP66	100W x 100H x 83D



66SO310

THREE PHASE

Part No:	Description	Amps	Voltage	IP Rating	Size (mm)
66SO420	20 Amp Socket Outlet 4 x Round Pins	20 Amp	500 Volt	IP66	100W x 100H x 83D
66SO520	20 Amp Socket Outlet 5 x Round Pins	20 Amp	500 Volt	IP66	100W x 100H x 83D
66SO432	32 Amp Socket Outlet 4 x Round Pins	32 Amp	500 Volt	IP66	100W x 100H x 83D
66SO532	32 Amp Socket Outlet 5 x Round Pins	32 Amp	500 Volt	IP66	100W x 100H x 83D



66SO432

Male Plugs

SINGLE PHASE: STRAIGHT

Part No:	Description	Amps	Voltage	IP Rating
66P310	10 Amp Straight Plug 3 x Flat Pins	10 Amp	250 Volt	IP66
66P315	15 Amp Straight Plug 3 x Flat Pins	15 Amp	250 Volt	IP66
66P320	20 Amp Straight Plug 3 x Round Pins	20 Amp	250 Volt	IP66
66P332	32 Amp Straight Plug 3 x Round Pins	32 Amp	250 Volt	IP66



66P310

SINGLE PHASE: ANGLED

Part No:	Description	Amps	Voltage	IP Rating
66PA320	20 Amp Angled Plug 3 x Round Pins	20 Amp	250 Volt	IP66
66PA332	32 Amp Angled Plug 3 x Round Pins	32 Amp	250 Volt	IP66



66PA332

THREE PHASE: STRAIGHT

Part No:	Description	Amps	Voltage	IP Rating
66P416	16 Amp Straight Plug 4 x Round Pins	16 Amp	500 Volt	IP66
66P516	16 Amp Straight Plug 5 x Round Pins	16 Amp	500 Volt	IP66
66P420	20 Amp Straight Plug 4 x Round Pins	20 Amp	500 Volt	IP66
66P520	20 Amp Straight Plug 5 x Round Pins	20 Amp	500 Volt	IP66
66P432	32 Amp Straight Plug 4 x Round Pins	32 Amp	500 Volt	IP66
66P532	32 Amp Straight Plug 5 x Round Pins	32 Amp	500 Volt	IP66
66P450	50 Amp Straight Plug 4 x Round Pins	50 Amp	500 Volt	IP66
66P550	50 Amp Straight Plug 5 x Round Pins	50 Amp	500 Volt	IP66



66P532

IP66 SERIES

Male Plugs

THREE PHASE: ANGLED

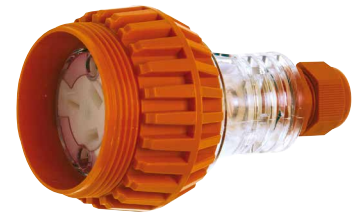
Part No:	Description	Amps	Voltage	IP Rating
66PA416	16 Amp Angled Plug 4 x Round Pins	16 Amp	500 Volt	IP66
66PA516	16 Amp Angled Plug 5 x Round Pins	16 Amp	500 Volt	IP66
66PA420	20 Amp Angled Plug 4 x Round Pins	20 Amp	500 Volt	IP66
66PA520	20 Amp Angled Plug 5 x Round Pins	20 Amp	500 Volt	IP66
66PA432	32 Amp Angled Plug 4 x Round Pins	32 Amp	500 Volt	IP66
66PA532	32 Amp Angled Plug 5 x Round Pins	32 Amp	500 Volt	IP66
66PA450	50 Amp Angled Plug 4 x Round Pins	50 Amp	500 Volt	IP66
66PA550	50 Amp Angled Plug 5 x Round Pins	50 Amp	500 Volt	IP66



Cord Connectors

SINGLE PHASE

Part No:	Description	Amps	Voltage	IP Rating
66SC310	10 Amp Cord Connector 3 x Flat Pins	10 Amp	250 Volt	IP66
66SC315	15 Amp Cord Connector 3 x Flat Pins	15 Amp	250 Volt	IP66



THREE PHASE

Part No:	Description	Amps	Voltage	IP Rating
66SC416	16 Amp Cord Connector 4 x Round Pins	16 Amp	500 Volt	IP66
66SC516	16 Amp Cord Connector 5 x Round Pins	16 Amp	500 Volt	IP66
66SC420	20 Amp Cord Connector 4 x Round Pins	20 Amp	500 Volt	IP66
66SC520	20 Amp Cord Connector 5 x Round Pins	20 Amp	500 Volt	IP66
66SC432	32 Amp Cord Connector 4 x Round Pins	32 Amp	500 Volt	IP66
66SC532	32 Amp Cord Connector 5 x Round Pins	32 Amp	500 Volt	IP66
66SC450	50 Amp Cord Connector 4 x Round Pins	50 Amp	500 Volt	IP66
66SC550	50 Amp Cord Connector 5 x Round Pins	50 Amp	500 Volt	IP66



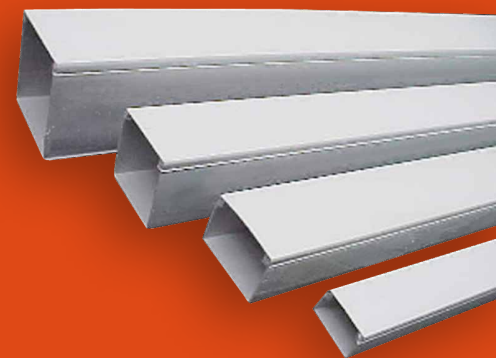
INDUSTRIAL C FORM THREE PHASE

Part No:	Description	Amps	Voltage	IP Rating
66PCF432	32 Amp Straight Plug 4 x Round Pins	32 Amp	500 Volt	IP67
66PCF463	63 Amp Straight Plug 4 x Round Pins	63 Amp	500 Volt	IP67
66PCF532	32 Amp Straight Plug 5 x Round Pins	32 Amp	500 Volt	IP67
66PCF563	63 Amp Straight Plug 5 x Round Pins	63 Amp	500 Volt	IP67
66SCCF432	32 Amp Cord Connector 4 x Round Pins	32 Amp	500 Volt	IP67
66SCCF463	63 Amp Cord Connector 4 x Round Pins	63 Amp	500 Volt	IP67
66SCCF532	32 Amp Cord Connector 5 x Round Pins	32 Amp	500 Volt	IP67
66SCCF563	63 Amp Cord Connector 5 x Round Pins	63 Amp	500 Volt	IP67



SECTION THREE

Conduit and Accessories



CABLE DUCTING

Part No:	Description
CD2516	Trunking 25mm X 16mm X 4m White
CD2525	Trunking 25mm X 25mm X 4m White
CD5025	Trunking 50mm X 25mm X 4m White
CD10075	Trunking 100mm X 75mm X 4m White
CD100100	Trunking 100mm X 100mm X 4m White



CONDUIT

RIGID CONDUIT (MEDIUM DUTY - GREY)

Part No:	Description
RC20MD	Conduit 20mm Grey 4 Meters
RC25MD	Conduit 25mm Grey 4 Meters
RC32MD	Conduit 32mm Grey 4 Meters



RC32MD

RIGID CONDUIT (HEAVY DUTY - ORANGE)

Part No:	Description
RC20HD	Conduit 20mm Orange 4 Meters
RC25HD	Conduit 25mm Orange 4 Meters
RC32HD	Conduit 32mm Orange 4 Meters



RC32HD

RIGID SOLAR CONDUIT

Part No:	Description
RC25HD-SOLAR	Solar Conduit 25mm HD Grey 4 meters

FLEXIBLE CONDUIT

Part No:	Description
CC2025	Flexible Conduit 20mm x 25m Grey
CC2525	Flexible Conduit 25mm x 25m Grey
CC3210	Flexible Conduit 32mm x 10m Grey
CC3225	Flexible Conduit 32mm x 25m Grey
CC4010	Flexible Conduit 40mm x 10m Grey
CC5010	Flexible Conduit 50mm x 10m Grey



CC2525

HEAVY FLEXIBLE CONDUIT

Part No:	Description
CC2025	Flexible Conduit 20mm x 25m Orange
CC2525	Flexible Conduit 25mm x 25m Orange
CC3210	Flexible Conduit 32mm x 10m Orange
CC4010	Flexible Conduit 40mm x 10m Orange
CC4025	Flexible Conduit 40mm x 25 mm Orange
CC5025	Flexible Conduit 50mm x 25m Grey



CC3210

CONDUIT ACCESSORIES

JUNCTION BOXES

Part No:	Description
JB1-20	Conduit Box 20mm 1 Way Grey
JB2-20	Conduit Box 20mm 2 Way Grey
JB3-20	Conduit Box 20mm 3 Way Grey
JB4-20	Conduit Box 20mm 4 Way Grey
JB5-20	Conduit Box 20mm Right Angled 2 Way Grey
JB1-25	Conduit Box 25mm 1 Way Grey
JB2-25	Conduit Box 25mm 2 Way Grey
JB3-25	Conduit Box 25mm 3 Way Grey
JB4-25	Conduit Box 25mm 4 Way Grey
JB5-25	Conduit Box 25mm Right Angled 2 Way Grey
JB1-32	Conduit Box 32mm 1 Way Grey
JB2-32	Conduit Box 32mm 2 Way Grey
JB3-32	Conduit Box 32mm 3 Way Grey



JB4



JB5



JB1-32



JB2-32

SADDLES - PVC

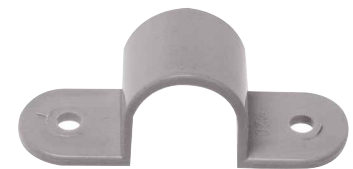
Part No:	Description
CLIP20	Conduit U Clip 20mm Grey
CLIP25	Conduit U Clip 25mm Grey
CLIP32	Conduit U Clip 32mm Grey
CS20	PVC Full Saddle 20mm Grey
CS25	PVC Full Saddle 25mm Grey
CS32	PVC Full Saddle 32mm Grey



JB3-32



CLIP25



CS25

SADDLES - STAINLESS

Part No:	Description
FSSS20	20mm Stainless Steel Full Saddle
FSSS22	25mm Stainless Steel Full Saddle
FSSS32	32mm Stainless Steel Full Saddle
HSSS20	20mm Stainless Steel Half Saddle
HSSS25	25mm Stainless Steel Half Saddle
HSSS32	32mm Stainless Steel Half Saddle



FSSS20

CONDUIT ACCESSORIES

SADDLES - GALVANISED

Part No:	Description
FS16	16mm Galvanised Full Saddle
FS20	20mm Galvanised Full Saddle
FS25	25mm Galvanised Full Saddle
FS32	32mm Galvanised Full Saddle
HS20	20mm Galvanised Half Saddle
HS25	25mm Galvanised Half Saddle
HS32	32mm Galvanised Half Saddle



FS20

BUSH

Part No:	Description
CB20	Male+Female Bush 20mm Grey
CB25	Male+Female Bush 25mm Grey
CB32	Male+Female Bush 32mm Grey



CB25

COUPLINGS

Part No:	Description
TC20	Plain Conduit Coupling 20mm Grey
TC25	Plain Conduit Coupling 25mm Grey
TC32	Plain Conduit Coupling 32mm Grey



TC25

TEES

Part No:	Description
IT20	Conduit Inspection T 20mm Grey
IT25	Conduit Inspection T 25mm Grey
IT32	Conduit Inspection T 32mm Grey



IT25

PLAIN TO SCREW

Part No:	Description
PS20G	Conduit Plain To Screw Adapter Incl Lock Nut 20mm Grey
PS25G	Conduit Plain To Screw Adapter Incl Lock Nut 25mm Grey
PS32G	Conduit Plain To Screw Adapter Incl Lock Nut 32mm Grey



PS25G

REDUCERS

Part No:	Description
RD25/20	Conduit Internal Reducer 25mm To 20mm Grey
RD32/25	Conduit Internal Reducer 32mm To 25mm Grey



RD32/25

CONDUIT ACCESSORIES

BENDS

Part No:	Description
SB20	Conduit Standard Bend 20mm Grey
SB25	Conduit Standard Bend 25mm Grey
SB32	Conduit Standard Bend 32mm Grey



SB25

ELBOWS

Part No:	Description
SE20	Conduit Solid Elbow 20mm Grey
SE25	Conduit Solid Elbow 25mm Grey
IE20	Conduit Inspection Elbow 20mm Grey
IE25	Conduit Inspection Elbow 25mm Grey
IE32	Conduit Inspection Elbow 32mm Grey



SE25

FLEXIBLE GLANDS

Part No:	Description
CCG20	Corrugated Conduit Screw Fit Glands 20mm Grey
CCG25	Corrugated Conduit Screw Fit Glands 25mm Grey
CCG32	Corrugated Conduit Screw Fit Glands 32mm Grey



CCG25

FLEXIBLE ADAPTORS

Part No:	Description
CSCT20	Flexible Conduit Adaptor Incl Lock Nut 20mm Grey
CSCT25	Flexible Conduit Adaptor Incl Lock Nut 25mm Grey



CSCT25

THREAD REDUCER

Part No:	Description
TRD25/20	25*20mm Thread Reducer
TRD32/25	32*25mm Thread Reducer



TRD32/25

SADDLE SPACER

Part No:	Description
SS20	20mm Saddle Spacer
SS25	25mm Saddle Spacer



SS25

CONDUIT ACCESSORIES

COUPLINGS

Part No:	Description
TCO20	Conduit Coupling 20mm Orange
TCO25	Conduit Coupling 25mm Orange
TCO32	Conduit Coupling 32mm Orange



ELBOWS

Part No:	Description
SEO20	Conduit Solid Elbow 20mm Orange
SEO25	Conduit Solid Elbow 25mm Orange



SEO25

STANDARD BENDS

Part No	Description
SBO20	Conduit Standard Bend 20mm Orange
SBO25	Conduit Standard Bend 25mm Orange
SBO32	Conduit Standard Bend 32mm Orange



SBO25

SWEEP BENDS

Part No:	Description
SWB32-90	Conduit Sweep Bend 90 Orange 32mm



SWB32-90

SECTION FOUR

Residential



SWITCH BOARDS AND ENCLOSURES

Surface Mount Switch Boards

Part No:	Description	Size (mm)
DB04WS	4 Way Switch Board Surface Mount	110W x 200H x 85D
DB06WS	6 Way Switch Board Surface Mount	150W x 200H x 90D
DB08WS	8 Way Switch Board Surface Mount	180W x 200H x 90D
DB12WS	12 Way Switch Board Surface Mount	225W x 200H x 90D
DB18WS	18 Way Switch Board Surface Mount	360W x 220H x 90D
DB24WS	24 Way Switch Board Surface Mount	270W x 325H x 87D
DB36WS	36 Way Switch Board Surface Mount	310W x 470H x 90D



DB18WS

IP Rated Switch Boards

Part No:	Description	Size (mm)
DB05WSIP55	5 Way Switch Board Surface Mount IP55	134W x 184H x 107D
DB08WSIP55	8 Way Switch Board Surface Mount IP55	225W x 225H x 110D
DB12WSIP55	12 Way Switch Board Surface Mount IP55	280W x 220H x 110D
DB18WSIP55	18 Way Switch Board Surface Mount IP55	385W x 240H x 110D
DB24WSIP55	24 Way Switch Board Surface Mount IP55	265W x 360H X 140D



DB18WF

Flush Mount Switch Boards

Part No:	Description	Full Size (mm)	Cut Out Size (mm)
DB06WF	6 Way Switch Board Flush Mount	195W x 260H x 85D	149W x 200H x 66D
DB08WF	8 Way Switch Board Flush Mount	230W x 245H x 85D	182W x 200H x 66D
DB12WF	12 Way Switch Board Flush Mount	305W x 245H x 85D	255W x 198H x 66D
DB18WF	18 Way Switch Board Flush Mount	410W x 270H x 100D	264W x 216H x 76D



EN2PS

Din Rail Enclosures

Part No:	Description	Poles	Size (mm)
EN1PS	1 Pole Enclosure Surface Mount	1	30W x 130H x 60D
EN2PS	2 Pole Enclosure Surface Mount	2	50W x 130H x 60D
EN4PS	4 Pole Enclosure Surface Mount	4	85W x 130W x 60D
EN6PS	6 Pole Enclosure Surface Mount	6	120W x 160H x 65D
EN8PS	8 Pole Enclosure Surface Mount	8	160W x 160H x 65D
EN12PS	12 Pole Enclosure Surface Mount	12	260W x 160H x 60D

Din Rail Enclosures with Tags

Part No:	Description	Poles	Size (mm)
EN1PS-TAG	1 Pole Surface Mount IP30 Enclosure With Tag	1	35W x 135H x 70D
EN2PS-TAG	2 Pole Surface Mount IP30 Enclosure With Tag	2	50W x 130H x 70D
EN3PS-TAG	3 Pole Surface Mount IP30 Enclosure With Tag	3	70W x 135H x 70D
EN4PS-TAG	4 Pole Surface Mount IP30 Enclosure With Tag	4	90W x 150H x 70D



EN3PS-TAG

MODULAR DIN RAIL

RCDs (RCCBs)

SKU	Variant Name
NL1-63-40-2P	40 Amp 2 Pole 6kA 'A' Type RCCB
NL1-63-63-2P	63 Amp 2 Pole 6kA 'A' Type RCCB
NL1-63-63-4P	63 Amp 4 Pole 6kA 'A' Type RCCB
NL210-63A 1PN 30mA	63 Amp B Type 2 Pole RCCB
NL210-63A 3PN 30mA	63 Amp B Type 3 Pole RCCB



NL1-63-63-4P

RCBOs (RCD with over current protection)

SKU	Variant Name
NB1L10A	1 Pole + N C10 30mA 'A' 6kA RCBO
NB1L16A	1 Pole + N C16 30mA 'A' 6kA RCBO
NB1L20A	1 Pole + N C20 30mA 'A' 6kA RCBO
NB2LE06A 6KA	Single Din RCBO 6A 6kA
NB2LE10A 6KA	Single Din RCBO 10A 6kA
NB2LE16A 6KA	Single Din RCBO 16A 6kA
NB2LE20A 6KA	Single Din RCBO 20A 6kA
NB2LE25A 6kA	Single Din RCBO 25A 6kA



NB1L16A

RESIDUAL CURRENT DEVICES

Main Switches

SKU	Variant Name
NH4-1P-63A	63 amp 1 Pole Main Switch
NH4-2P-63A	63 amp 2 Pole Main Switch
NH4-3P-63A	63 amp 3 Pole Main Switch
NH4-1P-100A	100 Amp 1 Pole Main Switch
NH4-2P-100A	100 Amp 2 Pole Main Switch
NH4-3P-100A	100 Amp 3 Pole Main Switch
NH4-4P-100A	100 Amp 4 Pole Main Switch
NH4-1P-125A	125 amp 1 Pole Main Switch
NH4-3P-125A	125 amp 3 Pole Main Switch
NH4-4P-125A	125 Amp 4 Pole Main Switch



NH4-1P-125A

Miniature Circuit Breakers 6KA (Class 3 Industrial)

'C' CURVE 1 POLE

SKU	Variant Name
NB1-63-02C1	2 Amp 6kA 1 Pole C Curve MCB
NB1-63-04C1	4 Amp 6kA 1 Pole C Curve MCB
NB1-63-06C1	6 amp 6kA 1 Pole C Curve MCB
NB1-63-10C1	10 amp 6kA 1 Pole C Curve MCB
NB1-63-16C1	16 amp 6kA 1 Pole C Curve MCB
NB1-63-20C1	20 amp 6kA 1 Pole C Curve MCB
NB1-63-25C1	25 Amp 6kA 1 Pole C Curve MCB
NB1-63-32C1	32 amp 6kA 1 Pole C Curve MCB
NB1-63-40C1	40 amp 6kA 1 Pole C Curve MCB
NB1-63-50C1	50 amp 6kA 1 Pole C Curve MCB
NB1-63-63C1	63 amp 6kA 1 Pole C Curve MCB
DZ158-80C1	80 Amp 6kA 1 Pole C Curve MCB
DZ158-100C1	100 Amp 6kA 1 Pole C Curve MCB
DZ158-125C1	125 Amp 6kA 1 Pole C Curve MCB



NB1 1 POLE MCB



DZ158 1 POLE MCB

LIGHTING

Part No:	Description
LBL021	Batten Holder - Bayonet Type
LBL021R	Batten Holder Reflector (Hat)



LBL021



LBL021R

WIRELESS RANGE

Part No:	Description
WI-ON/OFF LR KIT	1 Transmitter Module & 1 Receiver Module Long Range 500W
WI-2 WAY LR KIT	2 Transmitter Modules & 1 Receiver Module Long Range 500W

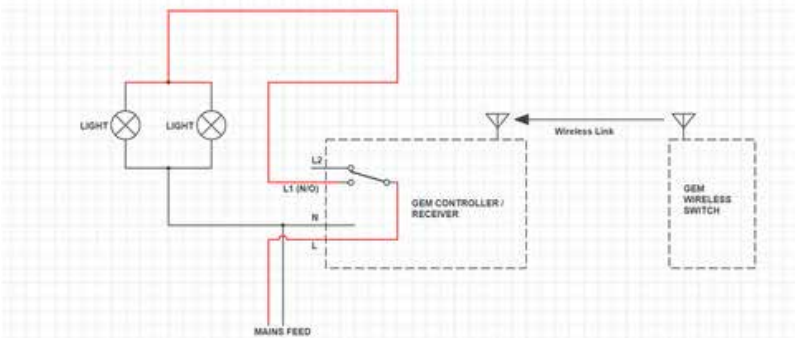


RECEIVER

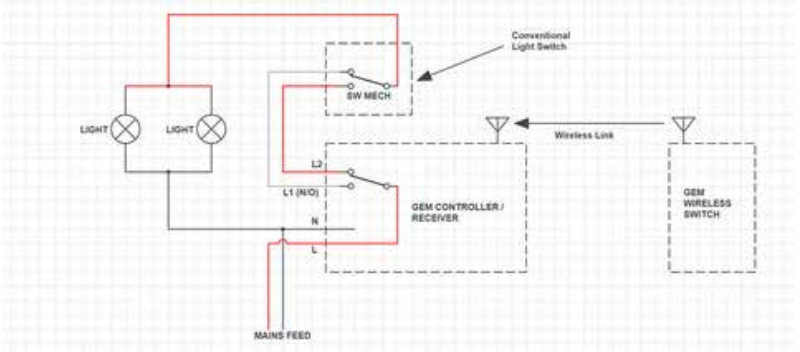


TRANSMITTER

SPST Wiring



SPDT Wiring



SWITCH PLATES

Switches

SKU	Variant Name
LBL001	1 Gang Switch
LBL002	2 Gang Switch
LBL003	3 Gang Switch
LBL004	4 Gang Switch
LBL005	5 Gang Switch
LBL006	6 Gang Switch
LBL001A	Architrave 1 Gang Switch
LBL002A	Architrave 2 Gang Switch
LBL003A	Architrave 3 Gang Switch
LBL004A	Architrave 4 Gang Switch



LBL001



LBL002A

Mechanisms

SKU	Variant Name
LBL990M	Switch Mechanism 10 Amp Double Pole
LBL970M	Switch Mechanism 15 amp Standard
LBL970DWASH	Switch Mechanism 15 amp DWASH
LBL970FAN	Switch Mechanism 15 amp FAN
LBL970FRIDGE	Switch Mechanism 15 amp FRIDGE
LBL970HEAT	Switch Mechanism 15 amp HEAT
LBL970HOOD	Switch Mechanism 15 amp HOOD
LBL970LIGHT	Switch Mechanism 15 amp LIGHT
LBL970MICRO	Switch Mechanism 15 amp MICRO
LBL970OUTSIDE	Switch Mechanism 15 amp OUTSIDE
LBL970SENSOR	Switch Mechanism 15 amp SENSOR
LBL970SPA	Switch Mechanism 15 amp SPA
LBL970WASTE	Switch Mechanism 15 amp WASTE
LBL980M	Switch Mechanism 10 amp Intermediate
LBL960M	Switch Mechanism 32 amp Standard
LBL960HOB	Switch Mechanism 32 amp HOB
LBL960OVEN	Switch Mechanism 32 amp OVEN
LBL960RANGE	Switch Mechanism 32 amp RANGE
LBL960STOVE	Switch Mechanism 32 amp STOVE
LBL201	5 Volt 2.1 Amp Dual USB Charger
LBLBTM	BT Telephone Mechanism
TVSM	TV Standard Mechanism
TVFM	TV 'F' Type Mechanism
LBL995M	TV 'F' to F' Type Mechanism



Asst Mechanisms



Mechanisms can be engraved to your specifications if required.



LBL201

SWITCH PLATES

Power Points

SKU	Variant Name
LBL007	Single Horizontal Power Point
LBL007M	Slimline Single Horizontal Power Point
LBL008	Double Horizontal Power Point
LBL008M	Slimline Double Horizontal Power Point
LBL016	10 Amp Single Horizontal Power Point with Extra Switch
LBL017	Double Horizontal Power Point with Extra Switch
LBL031	Single Vertical Power Point
LBL032	Double Vertical Power Point with Extra Switch
LBL033	Double Vertical Power Point with Extra Switch
LBL020	15 amp Single Horizontal Power Point
SSSO1	Single Surface Socket Outlet



LBL008M



LBL009N

TV Outlets

SKU	Variant Name
LBL009	TV Outlet (Standard Connection)
LBL009F	TV Outlet 'F' Type Rear Connection
LBL009N	TV Outlet F-Type Front & Rear

PCU & Phone Outlets

SKU	Variant Name
LBLPCU	Permanent Connection Unit Complete
LBLBT	BT Telephone Outlet Complete



LBLPCU

Switch Grid Plates & Covers

SKU	Variant Name
LBL001P	1 Gang Grid & Plate Only
LBL002P	2 Gang Grid & Plate Only
LBL003P	3 Gang Grid & Plate Only
LBL004P	4 Gang Grid & Plate Only
LBL005P	5 Gang Grid & Plate Only
LBL006P	6 Gang Grid & Plate Only
LBL951	Blank Plate



LBL002P

Covers - Silver

SKU	Variant Name
LBL001SIL	1 Gang Silver Cover Plate
LBL002SIL	2 Gang Silver Cover Plate
LBL003SIL	3 Gang Silver Cover Plate
LBL004SIL	4 Gang Silver Cover Plate
LBL005SIL	5 Gang Silver Cover Plate
LBL006SIL	6 Gang Silver Cover Plate
LBL007SIL	Single Horizontal Power Point Silver Cover Plate
LBL007MSIL	Slimline Single Horizontal Power Point Silver Cover
LBL008SIL	Double Horizontal Power Point Silver Cover Plate
LBL008MSIL	Slimline Double Horizontal Power Point Silver Cover
LBL016SIL	Single Horizontal Power Point Extra Switch Silver Cover Plate
LBL017SIL	Double Horizontal Power Point Extra Switch Silver Cover Plate
LBL031SIL	Single Vertical Power Point Silver Cover Plate
LBL032SIL	Double Vertical Power Point Silver Cover Plate
LBL033SIL	Double Vertical Power Point Extra Switch Silver Cover Plate



LBL001SIL

WIRING ACCESSORIES

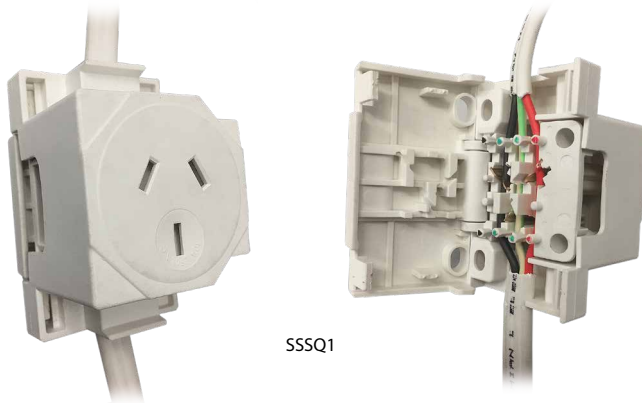
Part No:	Description
JB1L	Junction Box Large
JB1	Junction Box
MB1	Mounting Block Standard
MB1S	Mounting Block Shallow
HWK	Hot Water Termination Kit Complete
GIBCLIP	Gib Bracket (C Clip)
CJ1	Connector Single Screw 100 Pack
SC16-20	Spring Clip 16-20mm
SC25-32	Spring Clip 25-32mm
SSSQ1	Quick connect socket outlet single 10 amp
SSSO1	Single Surface Socket Outlet



JB1



MB1



SSSQ1



SSSO1

CHINT

THE WORLDS LARGEST ELECTRICAL MANUFACTURER

VOLT[®]

HIGH QUALITY ELECTRICAL PRODUCTS

Contact us

GENERAL ENQUIRIES

E: sales@qcelectrics.co.nz

P: 09 421 1180

SALES ENQUIRIES

E: siobhan@qcelectrics.co.nz

P: 021 414 424

TECHNICAL ENQUIRIES

E: greig@qcelectrics.co.nz

P: 021 277 5150

ACCOUNTS

E: accounts@qcelectrics.co.nz

Visit our website: www.qcelectrics.co.nz

QC Electrics is a New Zealand company with products supplied by leading international manufacturers.

Our products have passed certification requirements meeting the AS/NZ standards making them suitable for use in New Zealand. Specific product types also have extra protection and accreditations such as:

- Conduit is UV protected with AS/NZ 2053 accreditation
- Capping/Ducting lengths are individually plastic wrapped
- Our switchboard range is manufactured from self-extinguishing plastic
- Plastic products are made out of virgin plastics

For more information and supplier declarations of conformity please contact us or visit our website.

QC **Electrics**

39 Wainui Road
Silverdale
Auckland

E: sales@qcelectrics.co.nz

P: 09 421 1180

F: 09 421 1197